



Maui Economic Opportunity, Inc.

A Community Action Agency

"Helping People Help Themselves"

MEO, Inc.

189 Kaahumanu Avenue

P.O. Box 2122

Kahului, Maui, Hawaii 96732

(808) 871-9591

July, 1988 — June, 1989

CONTENTS

WHAT IS MAUI ECONOMIC OPPORTUNITY?

Founded in 1965, under the Economic Opportunity Act of 1964, MAUI ECONOMIC OPPORTUNITY is a private non-profit Community Action Agency that provides services for the low-income, elderly and persons with disabilities in Maui County.

Celebrating its 24th anniversary this year, MEO has offices in Kahului and Hana on the island of Maui, and on the islands of Lanai and Molokai. With a total staff of 165 employees and an over three million dollar budget of federal, state, county and private funds, MEO's funding level remains fairly constant in spite of consistent cuts in federal funding.

Programs include: Head Start for disadvantaged 3 to 5 year old preschool children; bus, van, wheelchair and gurney transportation for the elderly and handicapped to medical facilities, social and recreational programs, educational facilities, and county dining sites; chore services for people unable to attend to their own personal and household needs; employment and job training for the elderly and seasonal farm-workers; energy conservation; surplus food distribution and legal services.

In the area of economic development, MEO's ventures include Sugar Mill Auto Care, a very successful herb gardening project, and county-sponsored aquaculture program.

In carrying out these programs, MEO focuses on career development of its own clients, hiring them whenever possible, or referring them to associated agencies and businesses, and once hired, encourages them to further their education and training. MEO's motto is to help people help themselves.

While continuing to steer the organization in the direction of stable funding, MEO Executive Director Gladys Baisa states: *"Our challenge continues to be to meet the rapidly increasing demands for our services while our resources from traditional sources continue to decrease. This calls for creativity, a continual striving for excellence, and increasing the community's awareness of the agency and the value of its services."*

Message from Board President	2
Board of Directors	2
Board of Directors Annual Meeting	3
Executive Director's Message	4
Employees of the Month	5
Volunteers	6
Surplus Food	8
Energy	9
Herb Project	10
Aquaculture Projects	11
Puunene Ventures	12
Headstart	13
Transportation	14
Community Services	16
Employment and Training	19
Language Arts Multi-Culture Program	20
Organizational Chart	21
Key Staff Members	22
Funding Summary	23
Perfect Attendance	24
Activities	25

**Maui Economic Opportunity, Inc.
BOARD OF DIRECTORS
FY 1988-1989**

GOVERNMENT SECTOR

Frances Pagay
Representing Councilman Goro Hokama

Miriam Kahalekai
Representing Mayor Hannibal Tavares

Manuel "Junior" Moniz
Representing Senator Mamoru Yamasaki

Patrick Kawano, Councilman
County of Maui

Abraham Aiona
Representing State House Rep. Herbert Honda

Velma Santos, Councilwoman
County of Maui

Wayne Boteilho
Representing Councilman Bob Nakasone

Alice Lee, Councilwoman
County of Maui

PRIVATE SECTOR

Beatrice Barboza
Central Maui Hawaiian Civic Club

Mike Cepello
Maui Kokua Services

Lawrence Ing, Atty.
Private Business

Kimie Lane
Salvation Army

Sel Menor
Maui Filipino Council

Wallace Miyahira
Maui Japanese Society

John Perreira, Jr.
I.L.W.U.

Sheila Ludwick
Maui Chamber of Commerce

RESIDENT SECTOR

Harry Chung
Molokai Community Action Council

Pauline Higa
Mayor's Advisory Committee on the Handicapped

Maggie Masicampo
Lanai Transportation Consumers

Clark Nakamoto
Central Maui Seniors

Mayumi Fukuoka
Head Start Policy Council

Haruko Nakata
West Maui Seniors

Richard Abing
Molokai Community Action Council

Takashi Sakuma
East Maui Seniors



Kimie Lane
MEO Board President

Dear Friends:

As we celebrate the Silver Anniversary of the "War on Poverty," we suddenly realize that Maui Economic Opportunity, Inc. will become a vital part of our Nation's legacy of equal opportunity and social justice.

It is an exciting thought, and we applaud those who worked so hard in the past to start the peaceful "war". At the same time, we thank those who are still making it possible for their less fortunate friends and neighbors to shape a better life for themselves and their children.

The progress we have made would not have been possible had it not been for the commitment of Board members, dedication of staff, and the numerous individuals and groups who have contributed to the MEO, Inc. Ohana.

We have survived some "lean and mean" years with many innovative programs that are included in this report.

We now look to the future, trusting that the climate for people's programs will be warm and compassionate.

Best Wishes and Aloha,

Kimie Lane

Kimie Lane
Board President

MEO BOARD OF DIRECTORS ANNUAL MEETING

Returning to center stage, former mayor Elmer Cravalho was the main attraction as guest speaker at the MEO Annual Board Installation Dinner that was held at the Pukalani Country Club. Speaking to a packed house, he started his speech by informing the crowd that he is an unannounced candidate in the upcoming 1990 election for a new Maui mayor. He talked about the early days of tourist development on Maui, and how when he was mayor, he would get developers to build low cost employee housing as a condition of receiving County approval to proceed with their development. He cited the serious infrastructural problems facing the County of Maui today, as a result of the rapid growth of the visitor industry and questioned whether or not this is truly progress. He also said he felt that business and investment capital need to adjust themselves to meet the needs of the community. He called for more help for social agencies like MEO.



Our MEO Board Officers left to right Kimie Lane, Board President; Larry Ing, Secretary; Abe Aiona, Board Vice President.

Following a delicious buffet dinner, emceed by Police Lt. David Marciel, the new officers, Kimie Lane — President, Abe Aiona — Vice President, Larry Ing — Secretary Treasurer, were installed in a very impressive ceremony by Bob Agres, Director of the County of Maui Dept. of Human Concerns.

Board members Abe Aiona and Haruko Nakata were honored for missing only one meeting during the year, and perfect attendance awards went to Harry Chung, Bea Barboza, John Perreira, Sel Menor, and Pauline Higa.



On April 12, 1989 the State House & Senate honored the Board Presidents and Executive Directors of Hawaii's four community action agencies on the 25th Anniversary of the Economic Opportunity Act of 1964 that began the "War on Poverty."

Dear Friends:

We are proud to present you with our annual report.

A new Language Arts Multicultural Program on Molokai, development of the Senior Aquaculture project, and the implementation of gurney services in our transportation program highlighted the past year's new activities.

Several changes in Key staff and the organizational chart occurred. With the loss of former MEO deputy David Lawrence to the private business sector, Don Medeiros was hired to replace him, and Bill Bates promoted to deputy director, also. The dual deputy role has proven to be an effective means of sharing the administrative duties and providing better management and closer monitoring of all of the projects.

As we begin MEO's 25th year of service to Maui County, we want to thank all of our funders, Board members, staff, volunteers, clients and friends, both past and present, for their unfailing support of our mission — "Helping People Help Themselves."

With fond aloha,

Gladys C. Baisa
Executive Director



Gladys C. Baisa
MEO Executive Director



William "Bill" Bates
MEO Deputy Director



Donald Medeiros
MEO Deputy Director

MEO STARS EMPLOYEES OF THE MONTH

The Employee of the Month Program was started in January, 1985 to recognize MEO employees for superior performance, promote increased morale in the office, and to encourage excellence among the salaried staff. Employees of the Month were chosen by committees of their peers and awarded a day off of their choice plus a \$50.00 cash award. A short article was submitted for publication in *The Maui News*.



Fred Baisa
July '88



Charles Kamai
August '88



Lucas Reys
September '88



Dan Flavin
October '88



Susan Souza
November '88



Agnes Groff
December '88



Mary Ann McKay
January '89



Kanee Wright
February '89



Brenda Kaahanui
March '89



JoAnn Simms
April '89



Myra Piligrin
May '89



Evelyn Wilson
June '89

VOLUNTEERS

4th Annual Valentine's Day Volunteer Luncheon

150 volunteers were honored at the 4th Annual Valentine's Day Volunteer Recognition Party on February 11, 1989 at the Hale Mahaolu Elua's Community Center. Holding the luncheon on or near Valentine's Day is our way of saying "Thank You", "Arigato", "Mahalo", and "Salamat Po" for the many hours that have been contributed to MEO in carrying out our mission of helping the needy.

The tables were abundantly decorated with flowers, fruits and vegetables for the volunteers to take home.

Lt. David "Buzzy" Marciel was the MC and Jackie Harp, Maui United Way Director was the guest speaker. Abe Aiona, MEO Board of Directors Vice-Chairman, was assisted by Bill Bates, MEO Deputy Director, in presenting the certificates of appreciation to the honorees.

Entertainment was provided by MEO's Plunkett's Plunkers and Pauline Agres' Kabataan Dance Group.



Beautifully decorated tables provided take-home prizes at the volunteer party.

Retired Senior Volunteer Program

Senior volunteers play a very important role in MEO's success in implementing all of the different services for the elderly and the low-income residents of Maui County. Volunteers staff the Community Services office and distribute the surplus food commodities to over 3,000 families. They are also responsible for delivering the food commodities to home bound individuals.

VOLUNTEERS



The ever faithful Ida Plunkett's Plunkers provided entertainment for our volunteers at our annual Valentine Volunteer party.

MCCC Work-Line Program

This is the second year that MEO has been benefitting from the Work-Line Program of the Maui Community Correctional Center, coordinated by Lt. Rodney Perreira. MEO saved thousands of dollars by having the inmates on supervised release perform yard work, building maintenance, and assist with the monthly Surplus Food Distribution.



The MEO Handishoppers proudly accept their outstanding volunteer project award from the First Lady.

Handi-Shoppers

MEO's Handi-Shoppers won the First Lady's Volunteer Award for the "Most Innovative Project". This program helps the disabled and home bound residents of the Hale Mahaolu Congregate Housing facility. Group leader, Yukiko Kanoholani attended the Statewide First Lady's Volunteer Recognition Banquet that was held at Washington Place in Honolulu.

SURPLUS FOOD

Surplus food supplied by the U.S. Department of Agriculture to distribution sites across the country is handled in Maui County by MEO's Surplus Food Program.

We are the only Community Action Program in the State that has a regular monthly distribution and handles up to four food items at a time.

Butter, canned pork and beans, raisins, powdered milk and eggs, honey, peanut butter, flour and corn meal were among the items distributed to 3,300 low income families each month to help stretch their limited food budgets.

After serving the public, left over food commodities were given to Human Service agencies such as Salvation Army, 700 Club, Ka Hale Ake Ola, Teen Challenge, Aloha House, Women Helping Women, Family Youth Services, Kokua Services and Food Bank Maui.

Lucille DeMello, volunteer senior citizen and retired school teacher, handles the surplus food files and eligibility determination.



Senior volunteers distribute smiles and aloha along with the surplus food commodities.



Every month volunteers from the Community Work Line & Seniors lend "muscle power" to moving tons of surplus food.



MEO's surplus food program records are kept straight by Lucille DeMello.

ENERGY



Our dynamite energy team Fred Baisa and Evelyn Wilson check the computer that keeps our program statistics.

Weatherization Assistance Program

Better known as WAP, this program had a superlative year. Staff accomplished their annual goals 3 months in advance and earned MEO a 20% bonus. This achievement was a first throughout the State of Hawaii. The final installation counts for the year were: 55 heat pumps, 50 timers, and 226 insulation blankets throughout the islands of Maui, Molokai and Lanai.

In April, we started the new fiscal year with the absence of our Energy Specialist, Jennifer Hotta, due to illness. It was through Jennifer's managerial skills in leadership, foresight, and individual perseverance that the success of the program which helped low-income clients was achieved.



Fred Baisa expertly installs a blanket on a water heater under the WAP Program.

Low Income Home Energy Assistance Program (LIHEAP)

The LIHEAP program provided financial assistance to clients that were confronted with an energy crisis (termination of utility services). Under a contract from the State Department of Human Services, MEO qualified and assisted 199 low-income households. Up to \$200 on past due accounts was paid directly to Maui Electric Company, Molokai Electric Company and the Gas Company (GASCO). MEO also qualified 476 low-income applicants for energy credits on their utility bills.



Fred Baisa checks a WAP Program heat pump installation.

SENIOR HERB GARDENING PROGRAM

The pride of MEO's Economic Development efforts, the Senior Herb Growing project grossed \$300,000 through increased herb production and mainland sales during the past year. Thirty percent of this gross was returned to the growers while the agency's profit was used to supplement budget cuts in the Community Services Program.

The uniqueness of this herb program is, not only in returning profits to the growers in the form of money, but also in the returning of profits to support MEO's programs which service the community. The members' mutual support and volunteerism make the Senior Herb Project a true community development project.

Area coordinators meet every week of the year on a volunteer basis to plan the upcoming week and work with the growers in their area on production. Everyone shares in the profits and the decision making through the area coordinators. MEO pays a higher than average market rate per pound to the herb growers which enables the grower to receive a 30% profit of the gross.

This year the annual meeting of all the herb growers was held at the Wailuku Community Center. There were door prizes and recognition of those who freely gave more than usual to the project. This year the principal speaker was Gladys Baisa, our executive director. Her talk focused on the achievements of the project during the past year.

Numerous news articles in the Maui News, Honolulu Star Bulletin, and the New York Times featured our Herb Project. This has given our project excellent local and national coverage. Our name is well known locally as well as nationally.



Herb growers pack basil for shipping by air to East Coast cities.



Dan Flavin

MEO Agribusiness Director

MEO is now well known on the mainland among the distributors in various cities. Our marketing strategy and herb quality has given MEO an enviable market niche. Buyers now come to us for our product. This year MEO was invited to represent the State of Hawaii Herb producers at the annual Producers Marketing Association Show in Las Vegas. This is the largest food producers show in the country.

For the first time the culinary herbs of Rosemary, Thyme, Dill, Majoram, Oregano, Sage, Sorrel, Arugala, and Mint were also successfully marketed on the mainland. A wider variety of culinary herbs was sold to our distributors than all of the previous years combined.

The Molokai growers sold more herbs through MEO than any other year. This is mainly because of increased sales in the other culinary herbs besides Basil. With more training and expanded markets there will be a continued increase in herb production from the island of Molokai.

This past year 12 students from the University of Hawaii at Hilo spent a day with us to study our herb marketing model. They were very impressed with our growing and our marketing techniques. This was a great honor for MEO having university students come to study our operation.

For the coming year we hope to continue expanding our product line with a greater variety of herbs and to increase our grower production on the outer islands. The future still looks bright for the project.

AQUACULTURE

Senior Citizen Fish Farming Project

A \$60,000 grant from the Maui County Department of Human Concerns and 6 curious senior citizens enabled MEO to initiate the first cottage-level approach to Hawaiian aquaculture during 1988-89. With a staff of one, our Senior Citizen Fish Farming Project expanded from the one demonstration unit installed in Kahului during May, 1988, to a total of six backyard fish farms distributed from Central Maui to the Upcountry area. During its first year, the SCFFP concentrated on the culture of Chinese catfish, an air-breathing fish which is marketed live in local markets. Since these catfish are usually grown in earthen ponds, the SCFFP was concerned with demonstrating the feasibility of their culture in our small-scale, recirculating fish farms.

Beginning in October, catfish fingerlings (provided at no cost by the County of Maui aquaculture program) were transplanted to the senior participants' 2,000 gallon backyard fish farms. During the grow out period, important information was gathered on growth rates, survival, and feed conversion ratios. Just as importantly, the senior fish farmers learned the fundamentals of fish farming and, through periodic fish farmer meetings, were able to share their experiences.

Recognizing the lack of nutritional information and promotional materials concerning Chinese catfish, further funding was sought to address these needs. MEO's efforts in this area were aided by a \$4,363 Community Food and Nutrition Program grant from the Office of Community Services, Department of Labor and Industrial Relations, State of Hawaii. Their support enabled MEO to produce "Chinese Catfish in Hawaii: from fish farm to table", a 14 page booklet containing information on the composition of Chinese catfish, handling procedures and recipes.

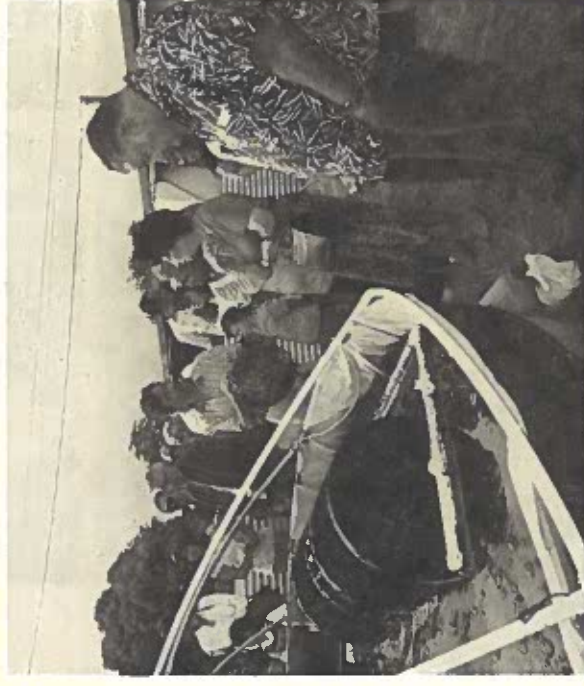
Unfortunately, about halfway through the project year, one of our two Pukalani fish farmers, Mr. Pedro Bagoyo, became ill and passed away. A few months later, during May and June, 2,394 catfish were harvested from the remaining 5 fish farms, packed and shipped off island. Interestingly, while originally grown as food fish, our MEO catfish ended up not on plates, but as a means to control the population of aquatic insect larvae in a hotel's large lagoon.



Ed Bartholomew
Aquaculture Director



1988-89 Senior Citizen Fish Farming Project participants take a break after completing census of Chinese catfish in Prisciliano Pasion's backyard. Form left to right: Shigeru Moriyasu (Wailuku); P. Pasion (Kahului); Enrique Ignacio (Makawao); Cheryl Rosenfeld (student volunteer, Marine Option Program, Maui Community College); Hisami Hosoda (Kahului); Pedro Macadangdang (Pukalani); and Ed Bartholomew (Project Director). Photograph taken by Allen Tom, Sea Grant Extension, University of Hawaii.



Our project kick off party participants including Mayor Tauavares, Senator Yamasaki, OCS and our Board and staff look at our pond and filter operation.

PUUNENE VENTURES

Sugar Mill Auto Care Center

MEO's economic development project, Sugar Mill Auto Care Center, is on a new set of wheels, according to James Almeida, Jr., new manager/mechanic since early January 1989. Assisted by a fully licensed mechanic — Chad Lee, mechanic helper — Douglas Carillo, and gas attendant — Rolly Domingo, James says having the lowest gas prices on the island has helped our fuel sales go up 200% since January. Repair sales have also increased steadily. Our mechanics are licensed in all aspects of vehicle repair, including heavy trucks, diesel engines and air conditioning. Started with a twin goal of providing priority, cost-controlled service to the MEO fleet, and income to MEO from profits, Sugar Mill has met the former, and is progressing toward the latter steadily, a result James credits to an effective team effort.



Sugar Mill's premier mechanic Chad Lee fixes a big truck while James tries to help!



James Almeida SMACC Manager/ Mechanic



The Sugar Mill staff Douglas Carillo, Chad Lee, Rolly Domingo and James Almeida have turned SMACC into a profitable business.

Deby's Roadside Cafe

Managed by Eric and Deby Santiago, the former Mabel's Kitchen is leased from MEO. Serving up hearty plate lunches and other delicious local food, this part of MEO's economic development efforts, at the Puunene site across the HC&S Sugar Mill, provides MEO with a small monthly income from the lease and a place to buy good and inexpensive lunches for the many volunteers who help us throughout the year.



Subleased to Deby's Roadside Cafe, MEO earns a small rental income from the former Mabel's Kitchen.

HEAD START PROGRAM

Project Head Start was conceived in 1965. The goal then, was to intervene before low-income children entered kindergarten, and to be sure they were given opportunities that their more affluent peers took for granted. Thus comprehensive educational services, which included medical, dental, nutrition and transportation were provided, as well as experiences to stimulate the intellect and develop a socially competent child.

Intervention with the child alone proved insufficient to ensure Head Start success, as parents, as well as the community, are involved in the child's life. Thus, the Parent Involvement and the Social Services components were added and are very important in the Head Start Program.

Good nutrition is a basic component of Head Start. DOE breakfast and lunches are served daily to the children, parent volunteers and staff, at no cost to the family. For many children, these meals are the only nutritional meals eaten daily.

Selection priorities are based on the needs of parents and the community. This past year, priority was given to children who live in home environments that are detrimental to children's growth (abusive parents, drug addicts, mentally ill parents, etc.) Handicapped children and four year old low-income children were also given priority for selections.

There are eight part-day centers (four on Maui, four on Molokai). There is a full day center on Molokai. The yearly enrollment in 1989 totalled 190 children.

MEO provides training for teaching staff and believes in upward mobility. As a result, six parents who entered the program as low income parent volunteers are now teachers in the program. All of the current teacher aides are former parents.

Carnation Nanod, who has been with Head Start since 1965, administers the program as Head Start Director. She is assisted by Kathleen Middleton, with 16 years of experience.



*Carnation Nanod
MEO Headstart Director*



Our Headstart children learn through craft projects.



Our Headstart boys enjoy building Lego toys.



TRANSPORTATION



MEO Passenger Assistance Technician Mary Feiteira, loads Thelma Pacheco from pool therapy.



Isabelle "Lee" Gaspar, MEO's Passenger Assistance Technician driver unloads her client at Hale Makua Day Health Program.

MEO's Transportation Service has become the enabling factor in many non-profit agencies in the county, such as Ka Lima O Maui (Maui Rehab), Maui Adult Day Care, Hale Haouli day activity center, congregate dining, Head Start, and renal dialysis.

Our goal in Transportation Service is to become the centralized agency for transportation of senior citizens, handicapped and low-income residents of Maui County. This will eliminate overlapping services provided by MEO and other non-profit agencies and make transportation more time and cost efficient for the state and county. We are just scratching the surface. Daily we must turn away requests for service as we are working to capacity with the resources we have.



MEO Bus Driver Susie Souza helps Seniors off the Bus at a nutrition site.



MEO Bus Driver Leona Salomon gives TLC to her passenger.

TRANSPORTATION

MEO's Transportation Service is our most vital, visible, and necessary service provided to Maui County mainly due to the lack of public transportation. MEO operates a fleet of 26 buses county wide with a capacity of 15 to 44 passengers each. This service provided transportation to 2,200 low income, elderly and handicapped adults and pre-school children with over 263,000 passenger trips County wide in 1988-1989.

The weekday service included transportation of children to Head Start, and of the mentally and physically disabled to recreational and work activities. The elderly were afforded trips to shopping centers, financial institutions, governmental offices, social services agencies, medical centers, social and recreational programs, educational facilities, and county congregating dining and nutritional programs.

With the addition of two new wheel chair vans in the past year, one with the capability of transporting eleven sitting and five wheel chairs, MEO has increased its wheel chair services by one hundred percent. This program has become so popular that it will be expanded in the future.

The Emergency Medical Ambulance Units in Maui County are reserved for emergencies only and there is no other gurney service on the Island. In 1988, MEO Transportation began non-emergency gurney service on a trial basis. The demand was so great that we had to purchase a second gurney which allowed more flexibility and improved service.

This year MEO Transportation received \$250,000 from the State Legislature which was used to purchase six new buses. These buses are scheduled to arrive in December, 1989.

Five new buses were received in the last year with one each going to Hana and Lanai. New buses are desperately needed to replace old and worn out buses that are no longer economically feasible to repair.

Because of the \$50,000 State grant received last year to improve the salary of our Drivers, the turn-over rate has greatly decreased and morale is at an all-time high.



*Agnes Groff
MEO Transportation Manager*



*Kerry Holokai
Transportation Assistant Manager*



Passenger Assistance Technician and Trainer Myra Piligrin assists our stretcher client on a trip to her doctor's office.



Eva Kauai, MEO's most Senior Bus Driver, cleans her bus.

TRANSPORTATION



MEO Passenger Assistance Technician Mary Feiteira, loads Thelma Pacheco from pool therapy.



Isabelle "Lee" Gaspar, MEO's Passenger Assistance Technician driver unloads her client at Hale Makua Day Health Program.

MEO's Transportation Service has become the enabling factor in many non-profit agencies in the county, such as Ka Lima O Maui (Maui Rehab), Maui Adult Day Care, Hale Haouli day activity center, congregating dining, Head Start, and renal dialysis.

Our goal in Transportation Service is to become the centralized agency for transportation of senior citizens, handicapped and low-income residents of Maui County. This will eliminate overlapping services provided by MEO and other non-profit agencies and make transportation more time and cost efficient for the state and county. We are just scratching the surface. Daily we must turn away requests for service as we are working to capacity with the resources we have.



MEO Bus Driver Susie Souza helps Seniors off the Bus at a nutrition site.



MEO Bus Driver Leona Salomon gives TLC to her passenger.

COMMUNITY SERVICES

This program provides a variety of services to the senior citizens and low-income residents of Maui County in the area of consumer advocacy, consumer education, outreach information and referral, consumer protection, safety and health services and the senior discount program.

Consumer Advocacy

In the area of consumer advocacy, the Community Services staff assists the senior citizen clubs and individuals in making their needs known and fulfilled. The Maui Senior Citizens Planning and Coordination Council, a body comprised of all the club presidents, is very active in lobbying for their needs and priorities. Using their senior power, they work very closely with the legislators and Maui County Council in obtaining funds to support and maintain programs for the seniors. This year they testified at various public hearings on lowering property taxes for seniors and disabled individuals. They were also united in battling with the Office on Aging's proposed area plan for the seniors, seeing to it that their No. 1 priority, which is transportation, will be ranked as No. 1.

Therapeutic Activities

MEO's Plunkett's Plunkers for the last 19 years provided therapeutic activities to patients of Kula Sanatorium, Hale Makua, and participants of the Maui Adult Day Care Center. Activities included singing and dancing to old-time music from their earlier days. This year, Ida Plunkett, founder and leader of this group, passed away, but it didn't stop the group's commitment to bring joy and happiness to their friends who always wait for their monthly visits.

Outreach Information and Referral

Outreach information and referral is a service that assists the seniors and low-income residents in getting assistance from various agencies in the community. What is so unique about MEO's information and referral service is that staff walks with clients through the entire process of eligibility determination. In 1988-89 MEO staffs counseled approximately 3,000 clients and referred 839 clients to various human service agencies for assistance.



Loretta Pacubas
Community Services Director

Legal Services

This is the second year that attorney Larry Ing, on a volunteer basis, provided legal services to the seniors 60 years or older on Fridays from 1:00 p.m. to 4:00 p.m. MEO Community Service staff assist in the preliminary work in the preparation of wills, trusts, powers of attorney and property transactions.

This year, attorney Ing expanded his free legal clinic to Molokai.

Chore Services

The main goal of this program is to sustain and maintain 200 disabled handicapped and aged individuals in independent living as long as possible, thereby preventing premature institutionalization and care home placement.

Services included light housekeeping, laundry, ironing, light yardwork and emergency marketing for those physically unable to perform such tasks. This program is also designed to help clients who are recuperating from a major surgery and clients with terminal illness who go in and out of the hospital.

Participants recover faster in a home environment where they enjoy the company of their friends and families longer. Keeping 200 participants out of institutions represents a considerable savings to the State which might otherwise be responsible for their care.

COMMUNITY SERVICES



MEO's Handicapped clients participated in our meeting with Legislators at the Kahului Library to lobby for transportation funds.

Discount Program

MEO continuously contacts local merchants and businesses and asks them to offer discounts to senior citizens. To date, 117 outlets on Maui and 7 on Molokai are active participants offering discounts to seniors 60 years of age and over. Discounts range from a waiving



Chore services senior aide Stella Swain shakes a rug for her client.



Maui County's most outstanding male and female seniors for 1989, John Nelson and Haruko Nakata were honored at the MEO Aloha Party.

of the 4% sales tax at many stores and businesses, 10 to 15% off at restaurants and drug stores, 20 to 30% off for car towing, and 50% off for acupuncture; The famous "MEO Red Card" is the ID required for participation.

Consumer and Nutrition Education

In the field of consumer and nutrition education, food demonstrations, lectures and workshops were coordinated with the University of Hawaii Extension Office and Maui Electric Company to assist seniors in learning how to read and interpret labels, stretch their income to combat inflation and expand their knowledge of nutrition.



Council Person Alice Lee installs P&C Officers Masayo Kurehiki, George Mascho, Marianne Bullock, Lucille DeMello and Rob Wead.

EMPLOYMENT AND TRAINING

Senior Community Service Program

Forty Qualifying Maui County Senior Citizens (55 years of age and over) participated in the Senior Community Service Employment Program during the 1988 program year. Participants were actively employed in non-profit host agencies within Maui County, including seven Moloka'i residents. The goal of SCSEP is to prepare program participants for unsubsidized employment. Program goals were met and MEO was granted continued SCSEP funding for the new program year.



*Geri Onaga
Employment and Training Director*



*Romulo Casino and his Supervisor
Sheldon Hamakua at the Maui Community
College Farm on Molokai.*



*Mantuel Kahakauwila, Clerical Office
Helper at Kilohana School on Molokai*



*Andrew Solomon, Nurseryman
Kalima O Maui Plant Nursery*



*File Clerk, Eva Muller at the County
of Maui Driver Licensing Section*



*Daniel Corpuz, Yardworker for
MEO Community Service Program*

EMPLOYMENT AND TRAINING

Migrant and Seasonal Farmworker Program

Much of the success of MEO's Migrant and Seasonal Farmworker Program is due to the efforts of our Moloka'i and Hilo office staff. Over a 2-year period, over 150 qualifying Maui County residents participated in various aspects of this program. Components included Classroom Training, in which a limited number of enrollees receive financial and program support while receiving classroom instruction at the community college level. Another component of MSFWP is Work Experience, which provides unskilled workers with basic work skills, thus enabling

them to compete in the unsubsidized work force. The largest aspect of the Seasonal Farmworker Program is On-the-Job Training. Participants learn an occupation while being placed in actual wage paying positions. Employers are reimbursed up to 50% of enrollees' starting wage during a designated training period. The purpose of MSFWP is to provide qualified farmworkers and their dependents with the training and skills necessary to compete in the agricultural and non-agricultural job market. MEO is proud to have again been chosen to operate this federally-funded program for the new program year.



*Fred Bicoy, MEO Area Coordinator, and Seasonal Farm Worker
Program participants, Maley Carpenter and Melanie Molina at the
MEO Office on Molokai.*



*MEO Community Service Aides, Wayne Wright and Annette
Gorospe do outreach work for the SFWP on Molokai, pictured with
Maley Carpenter and Melanie Molina.*



*Andrea Criste, SFWP participant in the Classroom Training
Program is enrolled in her 2nd semester at Maui Community
College.*



*An On the Job Training Program at Mapulehu Glass House on
Molokai.*

Older Individuals Program

On-the-job training followed by job placement into the unsubsidized workforce is the focus of the Older Individuals Program. This program is funded through the Federal Job Training Partnership Act, and allows MEO, Inc. to reimburse participating employers up to 50% of the enrollees' hourly wage during a designated training period. Placement goals were met this year, and other program goals were exceeded. Since MEO has again been granted funding for the new program year, recruitment efforts to assist in the training of unskilled older workers have already begun.

LANGUAGE ARTS MULTI-CULTURAL PROGRAM

This program provides assistance to third and fourth grade students that are disinterested and have become under-achievers. Students are referred to the LAMP program by the DOE principal, teachers and counselors.

The goals are to improve students language skills, listening, speaking, reading and writing. The program also strives to increase the students awareness, appreciation and respect for all cultures and customs, improve the students socialization skills with their peers, and other ethnic groups. Parental involvement which enhances the students self-esteem is an important aspect of the program.

MEO's pilot project was implemented at Kilohana Elementary School located in East Molokai. We received the strong support of Principal Steven Petro and his staff. A special classroom was made available and MEO furnished free transportation.

LAMP teacher JoAnn Simms and aide Cynthia Luafalemana recruited 26 students, a job which required many hours on the telephone and driving all over the East end of Molokai. Besides recruitment, they supported DOE teachers by providing tutorial assistance, conducted weekend class excursions to archaeological historical sites, Molokai Hospital and taro fields, and conducted the routine LAMP curriculum.



1st Lady Lynn Waihee cuddles one of our LAMP Student's siblings on her visit to our class at Kilohana School.



Making poi was a highlight the students enjoyed under the guidance of teacher JoAnn Simms.

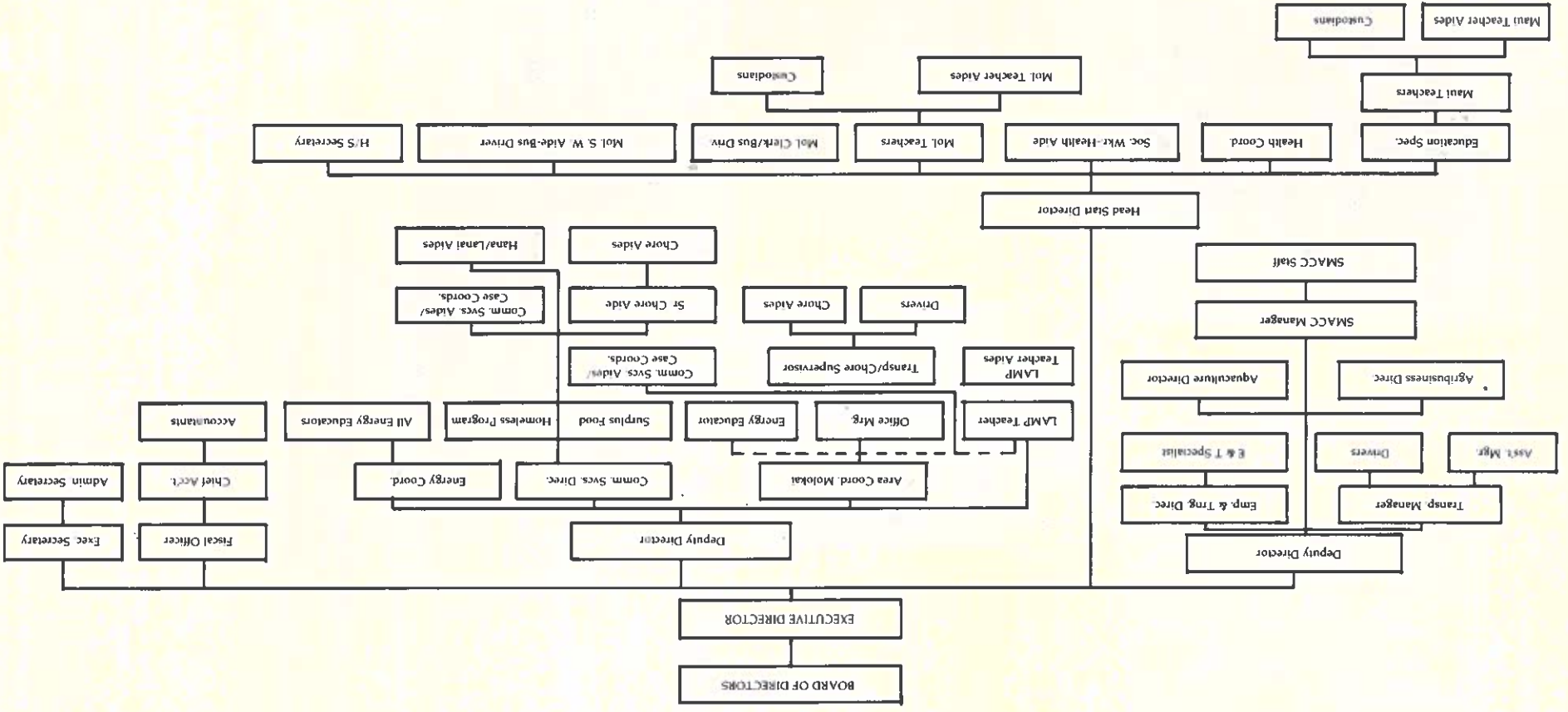


LAMP Students listen attentively as teacher aide Cynthia Luafalemana teaches basic health.



The MEO LAMP Class poses with 1st Lady Lynn Waihee on her classroom visit.

MAUI ECONOMIC OPPORTUNITY, INC. ORGANIZATIONAL CHART



MEO KEY STAFF MEMBERS

Gladys Baisa Executive Director
 William Bates Deputy Director
 Donald Medeiros Deputy Director
 Annette Spenser Executive Secretary
 Loreta Pacubas Community Services Director
 Fred Bicoy Molokai Area Coordinator
 Carnation Nanod Head Start Director
 Mary Ann McKay Fiscal Director
 Geri Onaga Employment & Training Director
 Ed Bartholomew Aquaculture Director
 Dan Flavin Agribusiness Director

SUPERVISORS

Kathy Middleton Education Coordinator
 Donna Santos Chief Accountant
 Agnes Groff Transportation Manager
 Jennifer Hotta Energy Specialist
 Hannah Davis Chore Service & Transportation Supervisor—Molokai
 James Almeida Manager/Mechanic Sugar Mill Auto Care Center
 Irene Kaahanui Molokai Office Manager

CENTRAL ADMINISTRATIVE OFFICE CLERICAL STAFF



Annette Spenser
 MEO Executive Secretary



MEO's fiscal team Donna Santos, Mary Ann McKay, Leslie Baisa and Barbara Kaholokua, missing is Julia Perriera.



Faith Park
 MEO Administrative Secretary

MAUI ECONOMIC OPPORTUNITY, INC. FUNDING SUMMARY 1988-1989

	GRANTS	TOTAL BUDGET
1.	CSBG Grant OCS	
	01-CAA Administration	150,947
	Transportation	147,397
	Community Food & Nutrition Program	4,363
	05-Community Services	141,759
	Training & Technical Assistance	12,384
2.	Weatherization Assistance Program	127,879
3.	Maintenance of Effort	66,357
4.	LIHEAP	5,627
5.	Language Arts Multi Cultural Program	40,500
6.	Homeless	26,004
7.	HEADSTART PROGRAM	
	20-Training & Technical Assistance	9,079
	22-Full Year Part Day	519,318
	23-Full Year Full Day	55,710
	26-Handicap Grant	23,858
8.	DEPARTMENT OF LABOR	
	Seasonal Farm Work Program	270,706
9.	COUNTY OF MAUI GRANTS	
	Transportation	319,925
	County Chore Service - MCCOA	25,150
	Transportation - MCCOA	40,000
10.	Chore Service - Title XX	88,023
11.	Senior Community Service Employment Program	156,069
12.	Job Training Partnership - OIP	16,563
13.	Transportation - Section 18	67,336
14.	Other Transportation Programs	284,739
15.	INCOME PRODUCING VENTURES	
	Sugar Mill Auto Care Center	400,000
	Puunene Property Sublease	5,971
	Herb Gardening Venture	260,000
	Senior Fish Farming Program	69,499
	Miscellaneous Fundraising Activities	38,278
	TOTAL	3,373,441

PERFECT ATTENDANCE



Special awards were given to Ora Latham - 7 years, Annette Spenser - 12 years, Stella Miyamoto - 6 years for Perfect Attendance.



Maui MEO Staff enjoyed a sumptuous buffet at Kapalua as a reward for Perfect Attendance for calendar year 1988.



Molokai Staff were treated to dinner at Pau Hana Inn as a reward for Perfect Attendance in 1988. Special honors went to Hannah Davis - 5 years and Gertrude Frantz for 6 years Perfect Attendance.

ACTIVITIES



History In the Making . . . Fred Bicoy writes his Newsletter on his new computer.



MEO Staff Myra Pilgrin and Annette Spenser work with cookbook editor, a former MEO employee, Olivia Pacheco at MEO's County Fair Booth selling MEO cookbooks.



Christmas Party Chairperson Geri Onaga enjoys the fruits of her labor.



MEO Senior "Paniolos" in the County Fair Parade.



Thanksgiving - Molokai Boy Scouts and MEO distribute food for the needy.



"An Af'fair" to Remember" Prize Winning Fair Parade Float