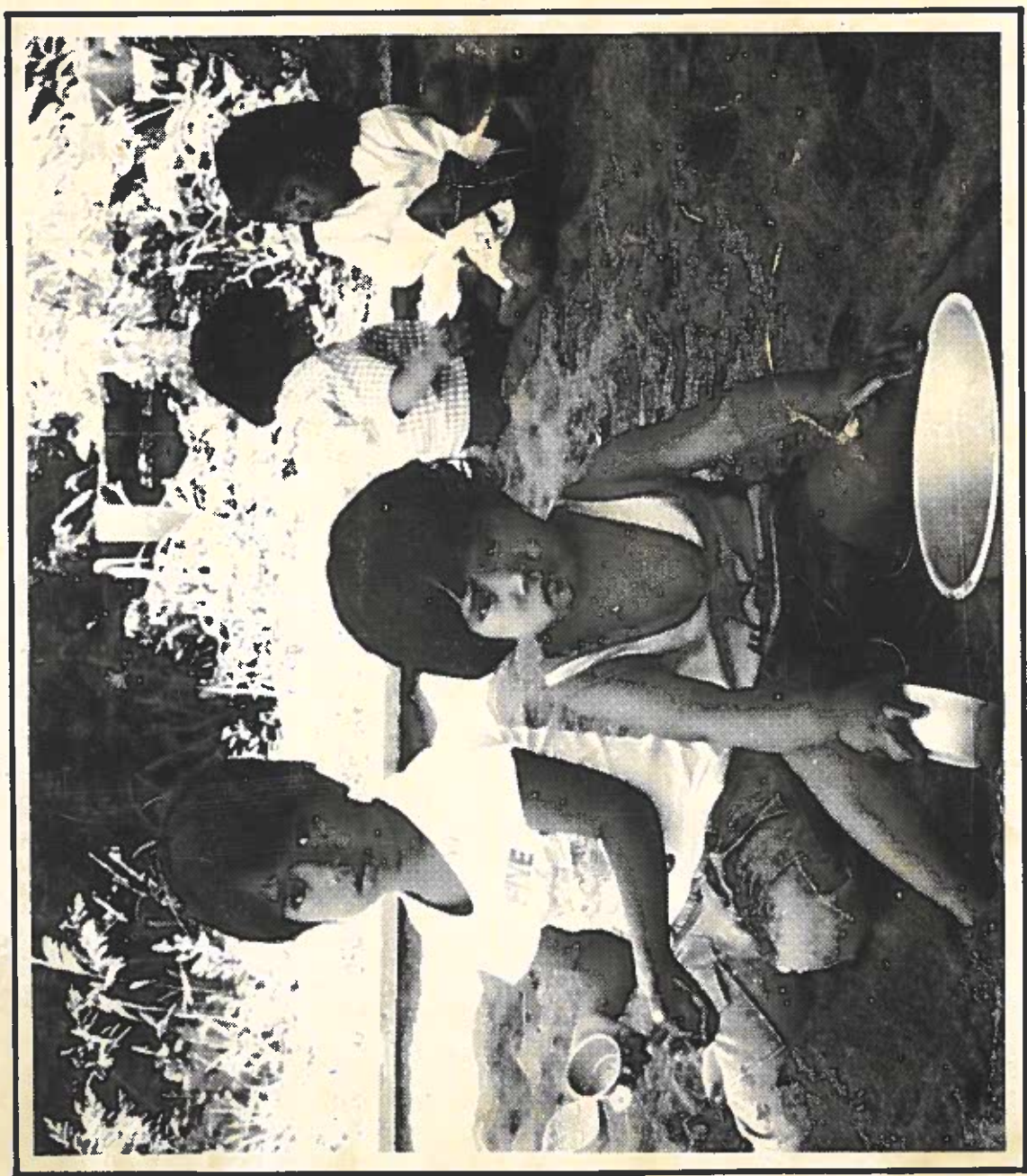


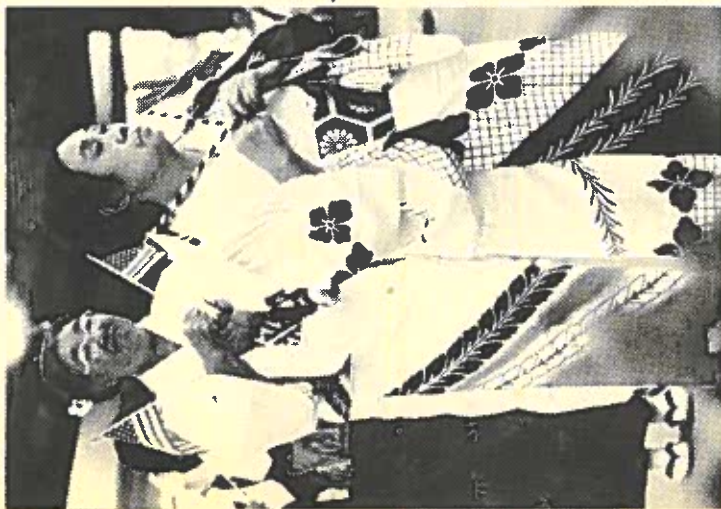
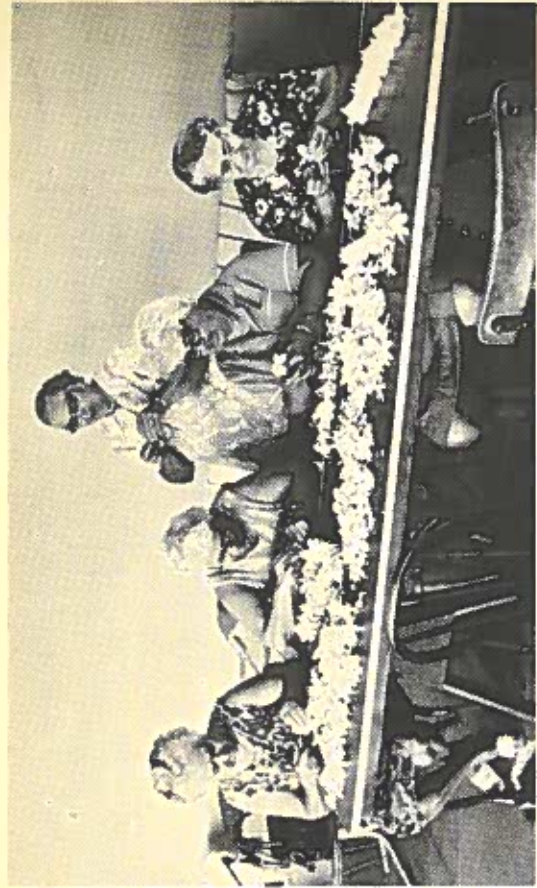


MEO



JULY 1976 - JUNE 30, 1977

ANNUAL REPORT



Joseph Souki, Executive Director MEO
Kimie Lane, Director, Maui County Dept. of Human Concerns

TABLE OF CONTENTS

Board of Directors	2
Executive Director's Message	3
Organization Structure	4
Funding Summary	5
Administration	7
Objectives	7
Energy Conservation	9
Seasonal Farm Workers	11
Senior Community Service Employment	13
Senior Opportunities	15
Community Organization	17
Transportation	19
Chore Services	21
Head Start	23
Day Care	25
Food & Nutrition	27
Senior Citizens Planning & Coordination Council	28
Head Start Policy Council	29
Energy Conservation Advisory Council	30

BOARD OF DIRECTORS — 1976-1977

GOVERNMENT SECTOR

Kimie Lane
Dept. of Human Concerns
County of Maui
Wailuku, Maui

Richard Kibe
Dept. of Finance
County of Maui
Wailuku, Maui

Kazuichi Hamasaki
Dept. of Social Services
State of Hawaii
Wailuku, Maui

Tom Hiranaga
Employment Services
State of Hawaii
Wailuku, Maui

Howard Nakamura
148 Nakoa Drive
Wailuku, Maui

Masami Fukuoka
Dept. of Education
State of Hawaii
Wailuku, Maui

Young Whee Chun
Dept. of Health
Mental Retardation Div.
Wailuku, Maui

Edward Perreira
P.O. Box 24
Paia, Maui

CIVIC ORGANIZATIONS INDUSTRY & LABOR

Sylvester Peros
591 Kuhao Street
Kahului, Maui

Rev. Milton Fricke
520 One Street
Kahului, Maui

Dr. Robert Bird
53 Puunene Avenue
Kahului, Maui

Louis Eaton
331 Ohaa Street
Kahului, Maui

Roger Knox
P.O. Box 1677
Kahului, Maui

Beatrice Barboza
434 Kanaloa Street
Wailuku, Maui

David Darling
RR 1, Box 780
Kula, Maui

Roman Piano
399 One Street
Kahului, Maui

RESIDENT SECTOR

Theresa Urayanza
4573 Spanish B Village
Puunene, Maui

Eben Purdy
743-C David Malo Circle
Lahaina, Maui

Hanky Yamamoto
P.O. Box 146
Kaunakakai, Molokai

Alfred Oshiro
Molokai Community Action Council
Kaunakakai, Molokai

Dorothy Sato
P.O. Box 632
Wailuku, Maui

Laticia Castillo
920 Lanai
Lanai City, Lanai

Kenneth Kubo
236 Lono Avenue
Kahului, Maui

Frank Lee
R.R. 1, Box 22
Haiku, Maui



Edward Perreira
Board Chairman



MAUI ECONOMIC OPPORTUNITY, INC.

188 KAAHUMANU AVENUE / KAHULUI, MAUI, HAWAII 96732

September 7, 1977

Mr. Edward Perreira, Chairman
MEO, Inc. Board of Directors
Kahului, HI 96732

Dear Mr. Chairman:

We are pleased to submit the MEO Annual Report for 1976-1977 on the eve of the 12th anniversary of the Head Start program in Maui County. The Head Start program, together with Community Organization provided the impetus and framework for the many programs that the MEO operates in the community today.

For FY 1977 special emphasis was directed toward programs combating spiraling inflation; such as energy conservation and consumer advocacy. Modest success was achieved in both endeavors as reflected in the annual report. We are hopeful of continuing this effort for FY 1978 for the poor is affected by inflation proportionately more than any other socio-economic group in this country.

Sincerely,

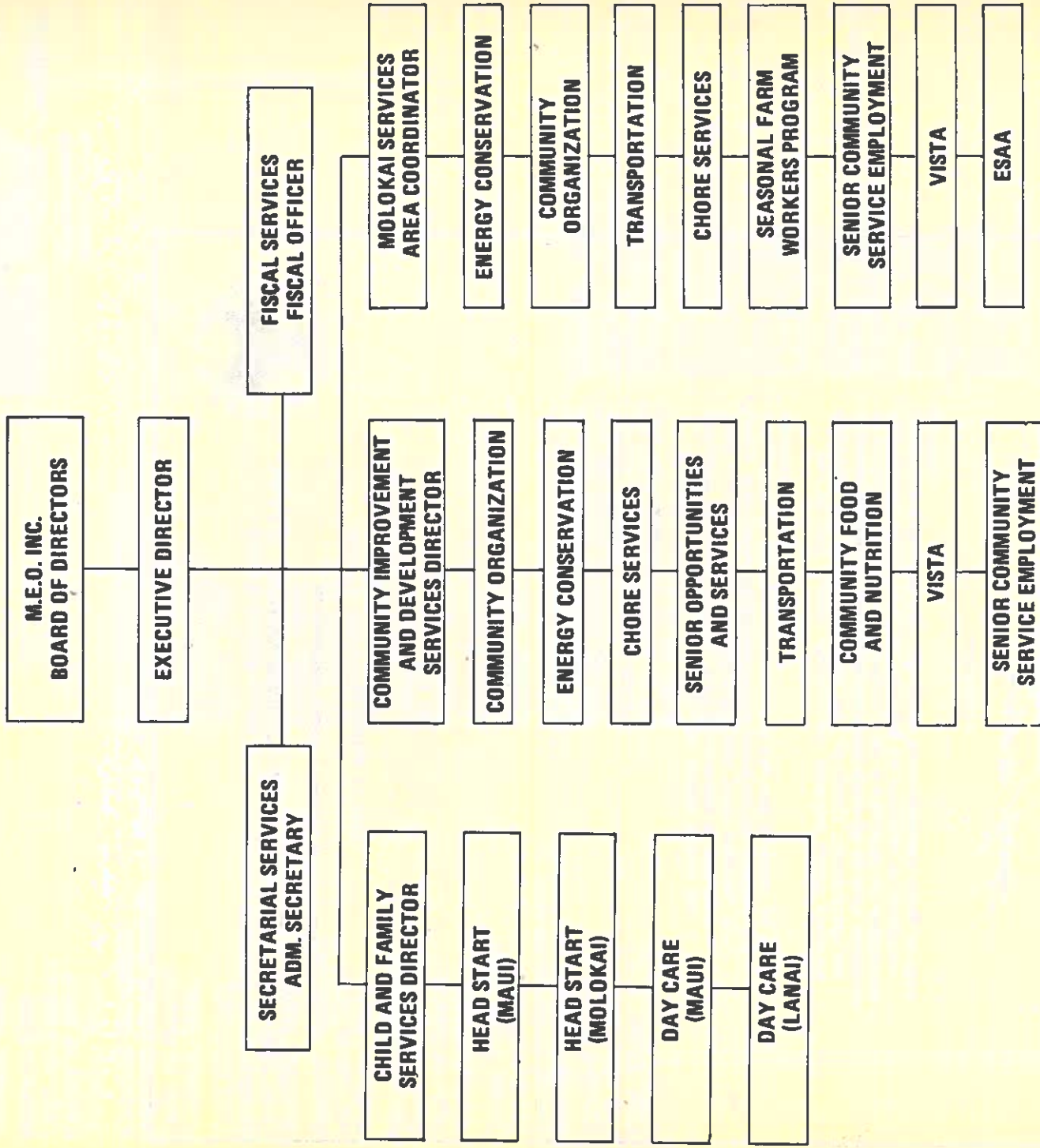
Joseph M. Souki
Joseph M. Souki
Executive Director

JMS/als

cc: Board of Directors

ORGANIZATIONAL STRUCTURE

FUNDING SUMMARY



	AMOUNT	FUNDING SOURCE
ADMINISTRATION	\$ 86,346	CSA
SENIOR OPPORTUNITIES AND SERVICES	87,218	CSA - FA
ENERGY CONSERVATION	133,623	CSA
TRANSPORTATION	125,003	HEW - <i>DSSA</i>
SEASONAL FARM WORKERS	368,972	DOL
COMMUNITY ORGANIZATION	97,645	CSA
SENIOR COMMUNITY SERVICES EMPLOYMENT	49,522	CSA <i>elder care - Oct</i>
CHORE SERVICES	57,052	HEW - <i>DSSA</i>
FOOD AND NUTRITION EFMS	68,484	CSA
HEAD START	326,356	HEW
DAY CARE	37,081	HEW
TOTAL FUNDING	\$1,397,302	HEW and STATE



Joseph M. Souki
Executive Director



ADMINISTRATION

The Executive Director has overall responsibility for insuring staff implementation of Board policies. His relationship with all jurisdictions of government and private agencies, including businesses, is that of a liaison officer, due to his knowledge of problems affecting the low-income population.

The Executive Director is assisted by the:

- (1) Administrative Secretary who is responsible for all secretarial and clerical activities of the agency and the expedition of the Director's schedules and priorities.
- (2) Fiscal Officer—responsible for all fiscal, property and personnel activities of the agency.
- (3) Project Director of Child and Family Activities—responsible for Headstart, Day Care and training activities for the agency.
- (4) Community Improvement and Development Director—responsible for all programs dealing with community problems and acts as the agency and grievance procedures.
- (5) Molokai Area Coordinator—responsible for the maintenance of the Molokai Area Council Committee and program staff operations in the Island of Molokai.

Line supervisory staff and other employees are expected to provide input whenever they see fit.

The Board of Directors has four major committees. The Program and Evaluation Committee evaluates programs to determine if the program objectives are being met and to ascertain the community impact. The Membership Committee is responsible to insure fair representation to interested community groups in the community. The Personnel Committee proposes and drafts new policies or policy revisions to the Board of Directors. The Grievance and Suggestion Committee provides services to Board, individuals and/or groups having complaints or grievances against the agency and/or its staff.

OBJECTIVES

Maui Economic Opportunity has as its primary objective an all out effort to intensify all possible methods to uplift and upgrade that segment of the community who have not been able to achieve the full realization of the American dream. Its goal is to eradicate poverty and its causes in Maui County.

MEO programs are geared toward provisions of the kinds of services which will make life easier to the underprivileged and give them access to resources which are available to help them to live with dignity and in increasing awareness of the advantages obtainable.

Its programs include any opportunities of which the segment served were perhaps unaware, or, if aware, were not cognizant of the approach to avail themselves of such opportunities.

Among such programs are: Senior Opportunity, Senior Community Service Employment, Transportation, Chore Services, Food and Nutrition, Energy Conservation, Head Start, Day Care, and Seasonal Farm Workers employment.

MEO covers all age groups and all ethnic backgrounds in Maui County, providing counselling, help and above all, compassionate understanding of the problems of the underprivileged.

ENERGY CONSERVATION

SOLAR HEATERS—PROGRESSIVE NEIGHBORHOOD PROGRAM

The problem of heating water has become an expensive one in Maui County as well as the rest of the nation. It is particularly so on the island of Molokai where electrical power has spiralled in cost due to a corresponding increase in the cost of fuel utilized by Molokai Electric Co.

A course of action which simultaneously conserves energy and cuts down the cost of water heating—in some cases as much as 70 percent in savings, has been initiated on Molokai by MEO.

It began in the 1975-76 fiscal year with the installation of two prototype solar heating units, with the ultimate objective of installing at least 100 solar heaters on low-income family homes. The undertaking was a cooperative one, keyed to using what was available.

During the past fiscal year, a total of 72 homes have had roof collectors installed; 51 have electrical hookups and another 21 soon will have. The plan is to eventually have holding tanks for the solar collectors, but for the present the tanks are being covered with special insulation before installation.

The innovative design was developed under Lafayette Young of Maui Community College and refined by the University of Hawaii Research Engineering Laboratory. Labor was furnished by County of Maui Manpower trainees and the entire cost funded by a CSA Energy Conservation Grant.

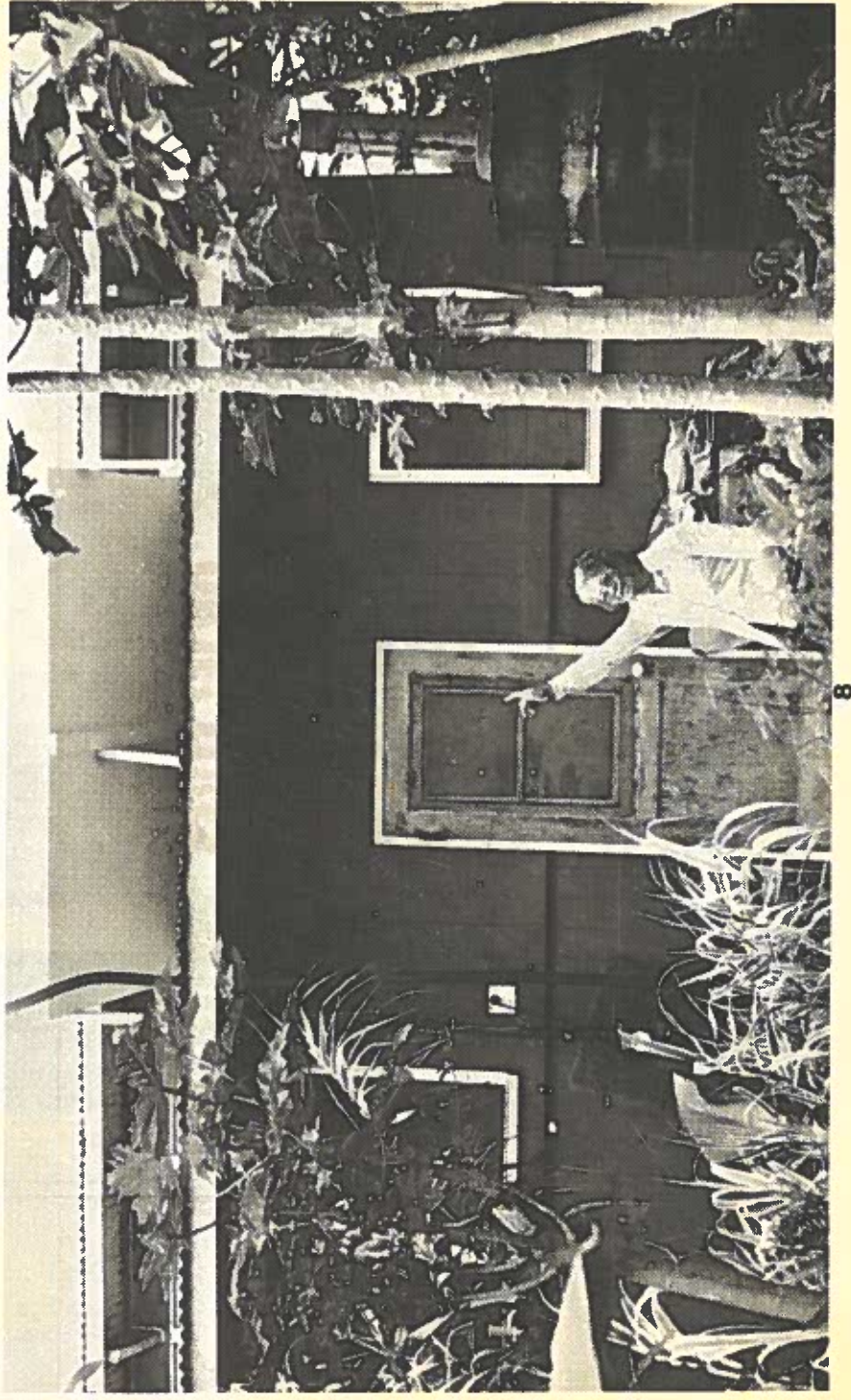
The design is simple and comparatively easy to fabricate, consisting of boxes of half-inch plywood 4 by 8 feet; half inch insulation fiber, copper tubing and sheeting, elbows and fittings. After assembly the copper is painted black. The collectors are mounted on the roofs of homes, faced south at a 16 to 18 degree angle so that the sun shines on the box-collectors all year round.

A gravity flow water system is not being used because the construction of most Molokai homes would require dual tanks. Instead, electric pumps and conventional water heaters are being installed. Even so, the savings in consumption and cost of electricity have averaged at least 40 percent a month.

Examples include that of Ruth (Mrs. Pedro) Domingo, a Seasonal Farm Worker Service Aide of Kaunakakai, who has six in her family. So far, savings resulting from the installation of her solar water heater have averaged 25 percent. A Geriatric Aide with the Senior Citizens Program, Mercy Marcellino, reports a savings of 60 percent. Mrs. Agnes Yuen, past president of the Neeimua Senior Citizens Club of Molokai, who lives in a remote area at Hoolehua, says she hasn't used electricity for her hot water supply since the solar heater was installed, except on very rare occasions.

The heaters cost \$400 each and are paid for at \$10 a month by the recipient from the savings on electric bills. The money repaid is then used by MEO to buy more solar heaters for other families.

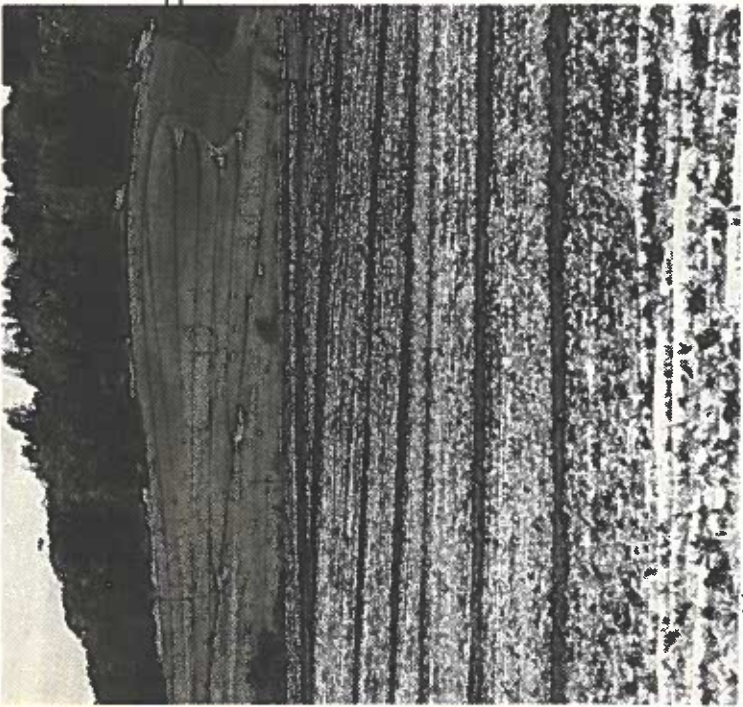
To qualify for a heater under the project, the person or family must own the home and have a poverty-level income. Among those who qualify are persons of Hawaiian or part-Hawaiian ancestry who live in Hawaiian Homes Commission homesteads.



NEWSQUAM

Progressive Neighborhood Program
 20 sol kits
 180-120
 30 kits to WCAP - standard 8 ft kits
 20 KEU
 20 kits
 20-25/16-54
 1500-Tuning
 ECHP - 625
 453,000
 WCAP - 165
 P.O. #1111
 ECHP 41,700 / 1966

MANPOWER



SEASONAL FARM WORKERS

Pineapple growing is the main agricultural industry on the islands of Molokai and Lanai which fall under the scope of jurisdiction of MEO together with the Island of Maui.

Unfortunately, the phasing out of the pineapple industry has begun on Molokai with resultant need to advise, refer and counsel depressed agricultural workers in ways of developing new skills in order to again become productive citizens.

The goal of this program is to provide viable employment alternatives and services, with priority for those affected on Molokai.

The services include upgrading skills, work experiences, outreach support services to eligible participants in need of alternatives, child care services to enable working mothers of eligible families to have care and supervision of their children during working hours, adult education to improve and increase communicative skills to enable participants to obtain confidence in their ability.

An average of 24 work experience slots were filled during the past fiscal year, increasing from 21 to a peak of 30 in June. Positions available and filled included Maunaloa Council, Police Department, County, DSSH, Maui Community College, Molokai High School, Maunaloa School, Molokai CAP, Molokai Hospital, Kualapuu and Kilohana Schools.

By the end of the year 19 enrollees had been placed in unsubsidized, permanent employment.

The cumulative enrollment in the Seasonal Farm Worker Program was 205. Classroom training was provided for six enrollees during the program year, and Day Care services averaged 40 per month. Manpower services were provided for 44 persons, Family Counseling for a total of 103.

