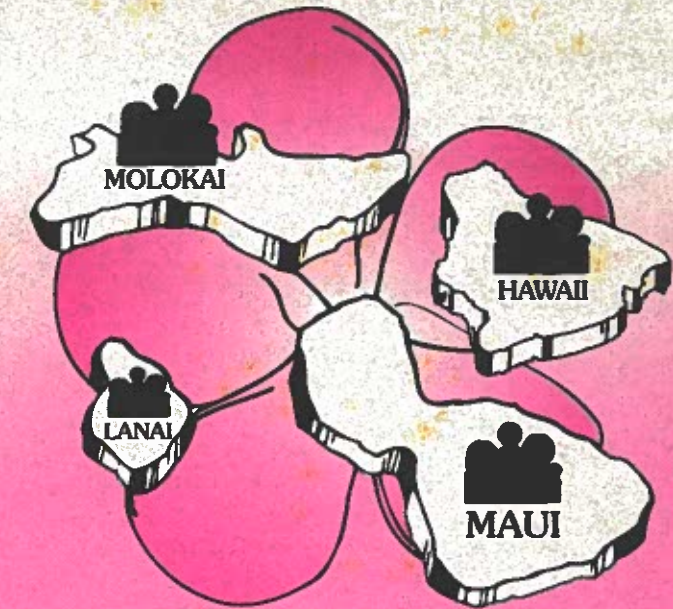


**MAUI ECONOMIC OPPORTUNITY, INC.**

**M  
E  
O**



*"HELPING PEOPLE HELP THEMSELVES"*

**ANNUAL REPORT**

**JULY 1993 – JUNE 1994**

**MEO**

P.O. BOX 2122  
KAHULUI, MAUI, HAWAII 96732  
(808) 871-9591  
FAX: (808) 871-2426

### What is MEO?

Founded in 1965, under the Economic Opportunity Act of 1964, MAUI ECONOMIC OPPORTUNITY is a private non-profit Community Action Agency that provides services for the low-income, elderly, immigrants, persons with disabilities, and other disadvantaged residents in Maui County and other locations in the State of Hawaii.

Celebrating its 29th anniversary this year, MEO has offices in Kahului and Hana on the island of Maui and on the islands of Lanai and Molokai and in Kona. With a total staff of 185 employees and near seven million dollar budget of federal, state, county and private funds, MEO's funding level continues to grow in spite of consistent cuts in funding from traditional grants. New revenue sources are constantly under development and research.

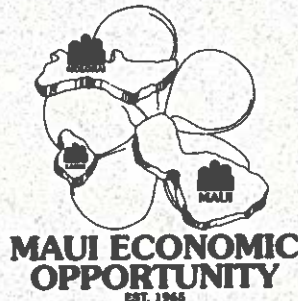
Programs include: Head Start for disadvantaged 3 to 5 year old pre-school children; bus, van, wheelchair, and gurney transportation for the elderly and persons with disabilities to medical facilities, social and recreational programs, educational facilities, and county dining sites; chore

services for people unable to attend to their own personal and household needs; employment and job training for the elderly, migrant and seasonal farmworkers, and other hard-to-serve; energy conservation; surplus food distribution; legal services; and in the area of economic development, MEO's ventures include Sugar Mill Auto Care, an herb gardening project, and Na Keiki Hauoli Pre-School.

In carrying out these programs, MEO focuses on career development of its own clients, hiring them whenever possible, or referring them to associated agencies and businesses, and once hired, encourages them to further their education and training. MEO is committed to full and equal opportunity to all employees and applicants and prohibits discrimination in employment because of race, color, sex, age, marital status, veteran status, national origin, religion, disability, arrest and court records or any other protected groups under State, Federal or local equal employment opportunity laws. MEO's motto is to "Help People Help Themselves."

### CONTENTS

	PAGE
Message from Board President .....	2
Board of Directors .....	3
Board of Directors Annual Meeting .....	3
Executive Director's Message.....	4
Employee of the Month Program .....	5
Volunteers .....	6-7
Surplus Food & Helping Hands Volunteers .....	8
Transportation.....	9-11
Head Start .....	12-13
Community Services.....	14-16
Chore Services.....	17
Employment & Training .....	18-19
Energy.....	20
Language Arts Multi-Cultural Program .....	21
JTPA 402 Migrant & Seasonal Farmworker Program.....	22-23
Agribusiness Projects .....	24
MEO Organizational Chart.....	25
MEO Senior Staff.....	26
Perfect Attendance Award Winners.....	27
Funding Summary .....	28
25th Anniversary Lahaina-Honolua Senior Citizen Club.....	29
Christmas at MEO .....	30
Highlights .....	31-32



**MAUI ECONOMIC OPPORTUNITY**  
EST. 1966  
P.O. Box 2122  
Kahului, Hawaii 96732  
Telephone: 808-871-9591  
Fax: 808-871-2426

### Board President's Message



**John Perreira, Jr.**  
*Board President*

June 30, 1994

Dear Friends and Supporters:

Another banner year has gone by and MEO can reflect back with pride on what has been accomplished.


The new Molokai facility, housing MEO staff and Head Start classes, is buzzing with activity, and continues to assist the Molokai community.

Because of the continuous growth of MEO's Transportation program and the installation of a sophisticated UNIX computer network, a trailer was purchased to house administrative and clerical staff for the program.

Other milestones during the past year included completion of the Lahaina Head Start and the near completion of the Head Start facility on the campus of Maui Community College, which is scheduled to open soon.

None of these accomplishments would have been possible without the cooperation and continued support of Mayor Linda Crockett Lingle, the members of the Maui County Council, the State Legislators, and last but not least, our dedicated volunteers.

Gladys Baisa, Don Medeiros, Bill Bates, the entire staff of MEO, Inc. and the Board of Directors are to be commended for completing yet another successful year, "Helping People Help Themselves"...

Aloha,  
  
 John Perreira, Jr.  
 PRESIDENT

### MEO Board of Directors

As of June 30, 1993

#### PUBLIC SECTOR

Bill Wong, representing State House Rep. Joseph M. Souki  
 Councilmember Junior Moniz • Councilmember Tom Morrow • Councilmember James Kimo Apana  
 Stephanie Aveiro, representing Mayor Linda Crockett Lingle • Riki Hokama, representing Councilmember Goro Hokama  
 John Perreira, Jr., representing U.S. Senator Daniel Akaka (Board President)  
 Councilmember Patrick Kawano

#### RESIDENT SECTOR

Mary Kay Hofmann, I.L.W.U. • Rose Duey, Alu Like • Artemio Baxa, Maui Filipino Council  
 Manuel Martins, Maui Portuguese Cultural Club • Tom Risko, Maui Visitor's Bureau (Board Secretary/Treasurer)  
 Brian Klaschka, Salvation Army • Kelsey Kawano, Maui Bar Association • Jim Whitehead, Maui Contractor's Association

#### PRIVATE SECTOR

Josette Naki, Head Start Policy Council • Charlotte Smith, County Commission on Persons With Disabilities  
 Nicolas Cabe, Central Maui Seniors • Lawrence Minami, West Maui Seniors  
 Ernest Otsuka, Molokai Community Action Council • Beatrice Kahanu, East Maui Seniors (Board Vice-President)  
 Linda Hubin, Lanai Area Council • Dean Fujii, Molokai Community Action Council

### MEO, Inc. Board of Directors' Annual Meeting & Installation Banquet

The MEO annual Board Installation Dinner was held on June 28th at the Nahele Room of the Sandalwood Restaurant in Waikapu. Over 100 friends, board members, and staff were in attendance. After a buffet dinner during which the guests were entertained by a harpist, former MEO Board member Velma Santos performed a beautiful installation ceremony. Board officers installed were John Perreira, Jr., President; Bea Kahanu, Vice President; and Brian Klaschka, Secretary/Treasurer. Sharing the spotlight as

guest speakers were Mayor Linda Crockett Lingle, House Speaker Joseph Souki, Senator Roz Baker, and Council Vice-Chair Dennis Nakamura. Retiring Board members Tom Risko, Mary Hofmann, and Ernest Otsuka were honored and thanked, as were members with perfect attendance, employees of the month, and the six Community Action Pioneers (staff with 25 years or more of service). Fred Bicoy, Molokai Branch Director was also bid a fond farewell on his retirement effective June 30, 1994.

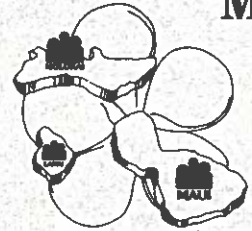


*In a symbolic Hawaiian ceremony Velma Santos installs MEO's new board members.*



*Former MEO Executive Director, House Speaker Joe Souki, reminisces during Annual Board Meeting.*

### Message from the Executive Director



**MAUI ECONOMIC OPPORTUNITY**  
EST. 1965  
P.O. Box 2122  
Kahului, Hawaii 96732  
Telephone: 808-871-9591  
Fax: 808-871-2426

June 30, 1994

Dear Friends,

It gives me great pleasure to present you with this annual report about MEO, our activities, and our services to the community during the past year.

Program year '93-'94 was another year of growth for us. Our programs and personnel grew along with our increased funding. The long-awaited MEO Molokai Facility was completed, the Lahaina Head start Center was also completed, a new administrative assistant was hired to enable deputy Don Medeiros to be assigned to transportation full-time, a Venture Committee of former board members was organized to assist us with development and monitoring of economic development projects for MEO, a new office trailer and state-of-the-art computer system were installed to accommodate the growth in transportation, the new MEO-MCC Head Start facility was begun, MEO acquired the Maui Counseling Service, and we began planning for occupancy of the former Live-In Center. These projects were in addition to all of the regular activities that are part of performing all of the daily administrative and program functions that are required.

Our board of directors, staff, volunteers, funders, and the community-at-large all worked together to make our progress this past year possible. Our largest challenge for next year will be to secure the site and funds to construct new facilities to house our current Kahului buildings. We are confident that the community of Maui will come together once again to assist us with this project so we can continue our 29 year old, proud tradition of "Helping People Help Themselves."

With much aloha and gratitude,

*Gladys C. Baisa*  
Gladys C. Baisa  
Executive Director



MEO's Administrative Team (L to R) Deputy Don Medeiros, Executive Director Gladys Baisa, Administrative Assistant Amanda Martin and Deputy Bill Bates.

### Employee of the Month

July 1993 - June 1994

The Employee of the Month Program was started in January, 1985 to recognize MEO employees for superior performance, promote increased morale in the company, and to encourage the search for excellence among the staff. Employees of the Month were chosen by committees of their peers and awarded a day off of their choice plus a \$100.00 cash award. A short article was submitted for publication in the Maui News. In 1993, an additional prize of a dinner for two, compliments of the Maui Beach Hotel, was added.

**JULY 1993**



**Norma Fernandez**  
Chore Service -  
County Wide

**AUGUST 1993**



**Larry Clark**  
Molokai Staff

**SEPTEMBER 1993**



**Chad Lee**  
At Large

**OCTOBER 1993**



**Lucille DeMello**  
Community Services-  
County Wide

**NOVEMBER 1994**



**Natalie Akuna**  
Maui Central Office Staff

**DECEMBER 1993**



**Mona Kailiponi**  
At Large

**JANUARY 1994**



**Anna DeOcampo**  
All-Maui Staff

**FEBRUARY 1994**



**Debra Spencer**  
All-Molokai Staff

**MARCH 1994**



**Louisiana Chang**  
All-Maui Staff

**APRIL 1994**



**Lydia Joao**  
All-Molokai Staff

**MAY 1994**



**Geri Kaina**  
At Large Company Wide

**JUNE 1994**



**Lyn McNeff**  
All-Maui Staff

## Volunteers

### Christian Riese Lassen Aloha Foundation



MEO's benefactors Carol Lassen and her internationally famous son Christian Riese Lassen.

Christian Riese Lassen and his mom, Carol Lassen, started their philanthropical mission in October of 1992. MEO, Inc. and its clientele were privileged and honored to be the first beneficiaries of their mission. Through the Christian Riese Lassen Aloha Fund, thousands of Maui County residents were fed, clothed, sheltered, rehabilitated and became self-sufficient.

Christian Riese Lassen is internationally famous for his Marine World art work. Since Christian is doing well in marketing his art work, he and his mom Carol decided to share their wealth with the underprivileged residents of Maui County and indeed exemplify the teaching of our Lord—"For I was hungry, and ye gave me meat; I was thirsty, and ye gave me drink; I was a stranger and ye took me in, naked and ye clothe me; I was sick, ye visited me; I was in prison, and ye come unto me."

Some of the services that the Christian Riese Lassen Aloha Fund provided are: Emergency shelter, food and medical service to homeless families, regular food assistance to low income elderly, medical, dental and medical equipment to the disabled, purchased trucks, vans and cars for disabled individuals to that they could be self-sufficient, Christmas presents to hundreds of children, purchased working equipment for the Maui



Deputy Directors Bill and Don present our "Special Angel" Carol Lassen with a token of MEO's appreciation.

Community Correctional Center workshop, and purchased chairs and books for the MCCC library.

To this date, Christian Riese Lassen provides funds to 44 various human service agencies, organizations and churches to maintain their programs to serve the homeless, disabled, and terminally ill.

The Christian Riese Lassen Aloha Fund does not limit their philanthropical mission to residents of Hawaii, as they are also allocating funds to several states that have experienced crises, disasters, and hunger.

This is the second year that the Christian Riese Lassen Aloha Foundation has been working with MEO in meeting the goal of giving back to the community. Christian Riese Lassen is well known internationally for his marine world art work.

Mrs. Carol Lassen (Christian's mother), executive director of the Christian Riese Lassen Aloha Foundation, works very closely with MEO staff to determine the eligibility of every applicant.

This year through the Christian Riese Lassen Foundation MEO provided assistance to 199 families/individuals. Assistance includes: housing, food, transportation, medical and safety equipment. A total grant of \$119,859.70.

## Volunteers

MEO's way of thanking the volunteers is to honor and recognize devoted volunteers on Valentine's Day, a special day to express love and gratitude to say Mahalo, Arigato, Salamat Po!!! For the many hours that they contributed to make the lives of the homebound, disabled, the poor and the needy more enjoyable and meaningful.

The 9th Annual Valentine's Day Luncheon was held on February 15, 1994 at the Maui

Beach Hotel, Red Dragon Room. Gladys Baisa, Executive Director began the gala event with a very warm welcome message.

Virginia Freitas was MEO's 5th recipient of MEO's "Volunteer Hall of Fame" award. She was cited for her loyalty and dedication in delivering surplus commodities monthly to 68 homebound residents of the Upcountry area. Virginia is 87 years old and has been assisting her friends and neighbors for the last 18 years.



Our Volunteer Hall of Fame winner for 1994 Virginia P. Freitas, receives her award from board officers John Perreira, Jr. and Bea Kahanu.



Harold Shimoda Volunteer Hall of Fame Award winner for 1993, receives his award from our Executive Director.

## Free Legal Clinic

This is the 7th year that Attorney Lawrence Ing has helped MEO's seniors 60 years and older with their legal problems.

This year Attorney Ing was forced to revise the criteria for his free legal clinic. In order to

shorten the waiting period of 4 months, he scheduled his visits to two (2) times a week instead of only one (1) time a week.

Free legal services are: wills, trusts, power of attorney and property transactions.



Attorney Larry Ing, MEO's first Volunteer Hall of Fame winner, gives keynote address at the Annual Volunteer Valentine luncheon.



The singing of "Hawaii Aloha" ended the program at the Annual Valentine's Day Luncheon.

### Surplus Food & MEO's Helping Hands Volunteers

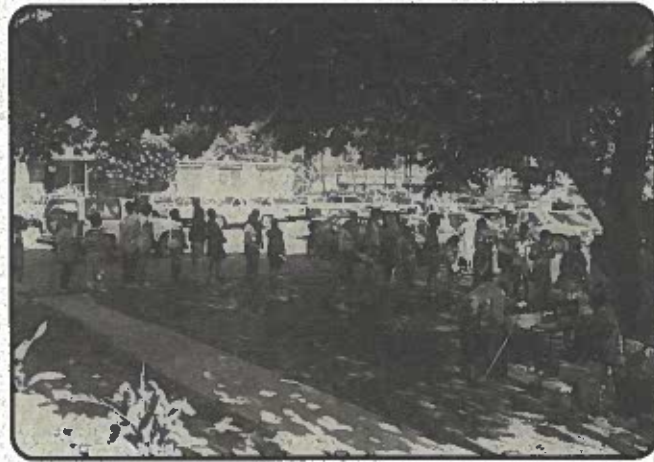
Monthly distributions of the federal surplus food commodities to 4,000 families were made possible through MEO's Helping Hands. MEO volunteers from all over Maui County go to designated delivery sites every 3rd Wednesday of the month to distribute the surplus food commodities on the Island of Maui, Molokai and Lanai. We have two (2) distribution sites in West Maui, the Lahaina Civic Center and Lahaina Methodist Church. Central Maui, has distribution at the MEO office and two (2) sub stations, Hale Mahaolu

Elua and Hale Mahaolu Akahi. In East Maui our distribution sites are at St. Gabriel Church in Keanae and at the MEO office in Hana. Molokai distributes the commodities from the Molokai office and on Lanai at the Lanai office.

Some of the commodities that were distributed this year are: Applesauce, apple juice, peanut butter, fruit cocktail, cornmeal, green beans, butter, rice, orange juice and canned peaches.



*Our faithful surplus food volunteers are ready to cheerfully service their clients monthly.*



*Some of the 4,000 surplus food recipients who come to MEO each month for their commodities.*



*Ever reliable and pleasant, the Handi-Shoppers of MEO deliver another batch of groceries to the homebound.*



*Many thousands of pounds of surplus food commodities are distributed to qualified residents throughout Maui County by MEO each month.*

### Transportation



*Our friendly Maui Transportation Staff take a moment from staff training to enjoy fellowship.*



*Trinidad and Rose carefully assist their passenger off of the bus.*

MEO's Transportation service continues to grow, to meet the diverse demands for transportation in the County of Maui. MEO now operates a fleet of 51 vehicles county-wide with a capacity of 3 to 44 passengers each, a net increase of ten vehicles over last program year. During the past year, this service, which is free to participants, provided transportation to 6,025 low income elderly, young people, adults with disabilities, and preschool children, providing 317,608 passenger trips county wide.

Transportation services include the transportation of persons with mental and physical disabilities to recreational and work activities, children to school (Head Start, public, and private), and general transportation for youths twelve to eighteen. A youth program such as this provides an opportunity for young people to participate in community activities and sports. The elderly were afforded trips to shopping centers, financial institutions, government offices, social agencies, medical centers, social recreational programs, education facilities, and the County congregate dining and nutritional programs.

In addition to our current services, MEO has been designated by the county as its transit provider. MEO is the Project Manager for the State-wide Rideshare/Paratransit Hardware and Software Development, and has been a participant in developing the State-wide vanpooling program recently awarded to VPSI. These projects are geared to reduce the number of cars on the road, thus improving the transportation system by reducing congestion.

This year MEO purchased two buses with County funds, one (1) forty-four passenger school bus, with an air-ride suspension to enhance passenger comfort. This bus is being used to transport

senior citizens, children, (including youth transportation), and other programs serviced by MEO requiring large passenger movements. The second, is one (1) twenty passenger school bus, assigned to the west side. It is transporting senior citizens, Head Start children, Maui Adult Day Care clients and persons with disabilities to and from work.

Each year MEO applies for Federal section 16(b)(2) funds (requiring a 20% MEO match) to pur-



*Reverend Kaina blesses our new buses with the help of the MEO bus drivers.*

chase one wheelchair bus. This year MEO purchased one (1) lift equipped seven wheelchair bus to address the growing demand for this specialized service. The larger capacity bus is needed to service group day health programs, dialysis, physical therapy; and various group activities, such as transportation to the Maui County Fair for persons with disabilities. This year, with assistance from the mayor's office, MEO successfully accessed Federal Intermodal Surface Transportation Efficiency Act of 1991 (ISTEA) funds. The funds were used to purchase three (3) twenty passenger school buses (to replace older units in need of replacement), and one (1) twenty-five passenger bus to address the overall need for additional transportation.

## Transportation

This year, MEO purchased five vehicles with MEO generated funds; One (1) mini bus, capable of transporting twelve-passengers and two wheelchairs, one (1) twenty-five passenger bus and two (2) five passenger vehicles. These vehicles will all be used to address the growing need for transportation services, including personalized escort service. MEO provides escort service to the general public with no program specifically funding it. Finally, a service truck was purchased for MEO's repair shop.

MEO's transportation service is the key to the success of many other non-profit and government agency programs in the county. To name a few - Hale Mahaolu, Maui Adult Day Care Center, Ka Lima O Maui, IMUA Infant Child Development Program, Hale Makua Day Health Program, American Cancer Society, Hospice Maui, Hawaiian Language Immersion Program, Seabury Hall, Wailuku Hongwonji



*Gladys and Agnes untie the maile lei with Bea Kahanu at the blessing of the new MEO Transportation Office trailer.*

Japanese Language School, Kaunoa Senior Center, Hale Hauoli Day Activity Center, congregated dining, and the JOBS program. Additionally, MEO is a member in the Emergency Operational Center of the Maui Civil Defense, responsible for transit.



*In keeping with our Safety First policy, we lend a hand to our departing seniors.*



*Passenger assistance technician Gwen Vinuya carefully transfers her wheelchair passenger.*



*Bus aide Rose Cooper supports her senior client as he boards the MEO bus.*



*Our young escort service client is securely fastened into a child safety car seat by MEO driver Pacifico Estrada.*

## Transportation

This program year, MEO operated three innovative new transportation programs funded by the County of Maui. The first, employment transportation for persons with disabilities, began as a pilot project last year. It has been refunded at a higher level to double its level of service. Participants pay 50¢ per trip. Uniquely personalized, the service transports 30 program participants daily to and from work, affording persons with disabilities the opportunity to maintain a productive life style. This very successful program has served a total of 61 unduplicated individuals this year. The second is the youth transportation program. As a result of monthly meetings with the directors of the Youth Centers on Maui, we have developed a flexible program to serve the youth of Maui free of charge, that continues to grow in popularity. This successful pilot program has served over 300 unduplicated individuals, and will be continued next year. The third program serves the general public free of charge with state of the art lift-equipped buses (complying with ADA regulations), linking shop-

ping, government and medical facilities with low income housing and residential areas within Kahului-Waiehu-Happy Valley and Wailuku. This program has been well received by the public, transporting in excess of 2,345 passengers each month (74% utilization) of available seats. Effective July 1, 1994, this popular service will be extended to include Saturday service.

This fiscal year 1993-1994 MEO received \$2,953,012 from State, Federal, County and private sources. Our goal in Transportation Service is to become the centralized agency for the transportation of senior citizens, persons with disabilities, low-income residents and the general public of Maui County. This will eliminate duplication of services and make transportation more time and cost efficient to the State and County. In spite of all that we are doing, we still daily turn away requests for service. We are working to capacity with the resources we have, and need to continue to expand to meet the growing transportation needs of Maui County.



*MEO's mechanics Chad Lee and Kamaka Freitas, check our fleet and keep it running in tip top shape!*



*Bus aide Ann Poouahi and driver Leona Salomon help disabled seniors at their destination.*



*Hannah Davis, bus driver, drops off seniors at lunch site on Molokai.*



*Bus driver Ipo Naihe, helps Maui's youth enjoy a beach outing courtesy of MEO's transportation.*

## Head Start Program

The ever-expanding Head Start Program had seen tremendous growth this year. This year, the program enrolled 228 children in eleven centers (Maui-7, Molokai-4) and thirty children in the home base program. In addition, the Office of Hawaiian Affairs (OHA) funded a literacy home base program on Molokai.

Out of eleven centers six were full time centers (8 am - 4 pm) for working parents, parents in training and parents attending GED classes or college. These centers also included children with disabilities (whose parents needed respite) and children from high risk homes.

The Program enrolls children who are three to five years old and meet the Federal income guidelines. Selection priorities are

given to (1) children with disabilities (2) children from high risk families (Parents who are incarcerated, child/spouse abusers, mentally ill, etc.) (3) children whose parents are in the JOBS Program and (4) four year old children who meet the income guidelines. If spaces are available, three year old children will be selected for enrollment.

The success and popularity of the Head Start Program is due to the comprehensive services offered to the children and their families. A great emphasis is placed on parent involvement. The program not only focuses on the children's needs, but also on the families' needs. Through individual family needs assessments, parents are given direct services, or referred to agencies who are able to meet their needs.



Charter MEO employee Carnation Nanod, Head Start Director, has been with the program since its inception almost 30 years ago.



Head Starts' Lynn McNeff seems as happy as our Toys For Tots recipient. Carol Lassen and her daughter, Reverend Diane Winter, provided the supplies for the toys.



Reverend David Kaalakea offers congratulations after blessing the new Head Start classroom at Wailuku Elementary School.



Mayor Lingle helped untie the maile lei at the dedication of our new Head Start classroom at Princess Nahienaena School in Lahaina.

## Head Start Program



Head Start teacher Lana Richards, teaches our Molokai children the joy of reading.



MEO Head Start Home Base 2 makes an "ocean mural" for the Atlantis Submarine Company.

Once a month, workshops will be held in all component areas to have parents become knowledgeable and gain parenting skills. Also, parents are encouraged to volunteer in the classroom so they will learn how to become the primary educator of their children. In addition, one parent from each center is selected and trained to become an active member of the Policy Council. The Council makes all policies and decisions for the program.

The Head Start Program believes a child is able to learn when all their needs are met. To meet their needs, comprehensive services (health, mental health, dental, education, disability, nutri-

tion, parent involvement, social services, transportation) are offered. A healthy Head Start child will succeed and be ready to learn when they enter kindergarten. MEO believes in upward mobility so 80% of the Head Start teaching staff are former parents. These employees are sent to college and are given preference when teaching positions are available. As a result, Head Start has a dedicated staff, many of them with many years of service with the program. (95% of the component staff have 100% attendance yearly). This has resulted in the program being recognized as a quality early childhood program.



A beautiful banner decorated the stage of the Makawao Head Start graduation.



Ghosts and goblins had a good time at the Halloween celebration at Kahului Head Start.



Proud staff and families present Wailuku B's graduates with a diploma and other souvenirs.



The Maui Community Correctional Center Worktime listens as Mayor Lingle thanked them for the Christmas toys they made for Head Start.

## Community Services

### CASE MANAGEMENT

This is a system that helps committed low income families/ individuals to become self sufficient by strengthening their skills and natural abilities to become self sufficient. The Case Managers main job is to develop a plan for their clients to follow and walk with them along their rocky road. Staff will monitor their client very closely, give them courage, improve their self esteem and assure their clients that they will always be there for them.

This year we provided outreach services to 599 families and individuals. Five hundred and eleven clients were provided extensive screening to determine their eligibility and appropriateness for the Family Development Program. We provided Family Development services to 382 families. Of these 382 families, Case Managers enrolled 82 under the program. At the end of the fiscal year they became self-sufficient. We exceeded our goal for the year by 273%.

Support services that were provided to our Family Development clients include rental assistance, food and clothing assistance, transportation, counseling and many other solutions to problems identified as barriers to steady employment and



Our Senior Planning Coordination Officers: (L to R) Wally Miyahira, Marianne Bullock, Bea Kahanu, Gladys Baisa, Lucille DeMello, Kenzo Takumi.



Case Manager Carmalei Leano counsels client on MEO services available.

self-sufficiency.

### SENIOR CLUBS

MEO Community Services staff continues to organize Senior Clubs in order to facilitate the delivery of services and make their golden years more productive and meaningful. To this date we now have a total of 31 Senior Clubs with a total of 7,500 seniors.

Resource speakers from various agencies and businesses attend the Ku Club monthly meetings to provide updated information relative to seniors.

MEO circulates the monthly newsletter "Senior Scoop" to all the club members. They can get information regarding health safety, nutrition, shuttle schedules for transportation and senior activities.

The monthly meeting is their time to socialize with their fellow seniors, a place to learn and discuss issues and concerns affecting them. For many of the clients this is their only chance to lessen their boredom of living alone and keep them abreast of current issues.

### OUTREACH INFORMATION AND REFERRAL

This is a service that assist the seniors and low income residents in obtaining services from various human service agencies. MEO staff provide home visits to the disabled, homebound and persons with disabilities to help them with their special needs. MEO staff accompanies and assist the clients through the entire eligibility determination process, from completing necessary forms, to acting as their official personal representative for interviews and redeeming their food stamps authorization coupons. This year we made 1,562 referrals to various agencies and organizations.



Maui Community Services staff Kay Yamamoto, Loreta Pacubas, Ora Lathan and Carmelei Leano.

## Community Services

### SENIOR "RED CARD" PROGRAM

This is one of our most popular programs in Maui County. As soon as seniors turn 60 years of age they are at the door of the Community Services Department for their red discount card.

New businesses, supermarkets and drug stores call in to inquire how they can be included in MEO's Senior Discount Program. A total of 88 outlets on the Valley Isle, 5 on Lanai and 7 on Molokai are presently giving discounts to elderly residents 60 years and older. Discounts range from 10-15% on restaurants and prescriptions, to waiving the 4% sales tax on many stores and businesses.

### HEALTHCARE AND EMERGENCY NEED ASSISTANCE

It's the third year that the Hawaii Community Foundation has awarded grants to MEO to provide emergency assistance to needy families/individuals of Hawaiian ancestry under the Lillian Wilder and Irving S. Singer funds. The agency also received Alice M.G. Soper funds to assist under privileged individuals 50 years or older.

This year the Hawaii Community Foundation has awarded MEO two (2) additional grants. Gwenfread Allen grant to service the mentally disabled individual, 62 years old or older and the

Kitaro Watanabe grant to assist children under 18 years of age with medical conditions.

The grant provided financial assistance to 73 families/individuals that needed special medical assistance, or had any financial difficulties, or problems that affected their health, safety or independence. Grants from these funds were awarded only if the client and MEO staff could not obtain assistance from other resources in the community.

Some guidelines of this program are:

- The individual is without resources to resolve financial need.
- No other resources are available in the community to assist the applicant nor can family or friends.
- The individual need can be met with financial assistance from the grants program or with assistance of several collaborating agencies.
- The individual need can resume an independent lifestyle if financial assistance is provided.
- The health or safety of individual is at risk if assistance is not provided.
- The financial assistance is not available for death related costs, education or entrepreneurial related expense.



Case Managers confer in the Molokai Office with Deputy Bill Bates.



Friendly and courteous service is the motto of MEO's case manager, Kay Yamamoto.

### Community Services

#### HOMELESS PROGRAMS

MEO has three (3) different types of grants to help the homeless or at-risk of becoming homeless. This year the County of Maui have given MEO a total grant of \$173,000. We assisted 176 individuals, families with their security deposit, first month rent and utilities.

Hawaii Housing Authority has given MEO a total grant of \$32,840 to assist the homeless and at-

risk of becoming homeless. We assisted 36 individuals/families with their rent, food and clothing.

With the OCS Emergency community Services Homeless we assisted 12 individuals/families with their security deposit, first month rent, back rent, clothing and food.

All of these grants, Case Managers did extensive case management to make sure that it would be long term housing for the individual/ family.



Officers of the Wailuku Aloha Club were installed in a special ceremony held at the Sandalwood Golf Course Restaurant.



Molokai Branch staff enjoy a special luncheon together at one of their famous pot lucks.



Case manager Henrietta Mokiau and her Molokai senior clients.



Mrs. Ora, affectionately known as "Tia", is a favorite of our Hispanic Case Management clients.

### Chore Services

It has been 22 years ago when MEO first launched it's Chore Service Program to help maintain the disabled and frail elderly in an independent living environment as long as possible.

This year we have provided essential housekeeping, laundry and light yard work to 286 disabled and frail elderly. MEO continues to look for avenues to help our clients meet their emergency needs.



Service with a smile is Paulina Santiago's style!



Either a bed or a couch, Peggy Kaina makes sure the sheets are clean.



Anita Mokiau, chore service worker, gets those windows sparkling clean at Home Pumehana on Molokai.



Teofila Arroccena tidies while chore service client reclines in comfort.



Maui's chore service team: (left to right) Peggy Kaina, Teofila Arroccena, Dahlia Benjamin, Paulina Santiago, and Naomi Hedani, supervisor.

## Employment and Training

### What is Employment and Training?

MEO has operated labor training programs since 1968, serving the elderly, the migrant and seasonal farmworker, and the economically disadvantaged persons and their families within Maui County who are facing serious barriers to employment with pre-employment enhancement skills, training, and related services to enable them to become economically self-sufficient. Under the proposed programs, MEO provides a full range of training and support services to include outreach, recruitment, intake, assessment, counseling, career planning, development or pre-employment training, occupational skills, and direct placements into jobs.



The use of office machines is one of the job skills learned by SCSEP enrollee "Auntie" Napua at our Molokai office.

The President's committee for economic development report of 1978 states, "Most jobs in the country are designed for prime-age, full-time, socially disciplined workers. However, there is a large group of people in this country who want work but cannot obtain jobs, even in relatively good times..." Those suffering from already existing changes are the hard core unemployed (economically disadvantaged, displaced homemakers, welfare recipients, offenders, school dropouts, etc.) and transient workers. Our programs are designed to assist this group of people who require more individualized training and services than the normal job seeker.



SCSEP enrollee Victorino Romero assists with the sprinkler system at the A&B Sugarmill Museum.

### Senior Community Service Employment Program

The Senior Community Service Employment Program provides part-time employment to low income older persons 55 years of age and over. Senior citizens are placed in public or private non-profit agencies to perform a variety of services such as clerical assistant, groundskeeper, cultural resource persons, outreach workers, etc. SCSEP enrollees work approximately 19 hours a week at

\$5.25 per hour. Thirty six (36) Maui county participants were enrolled into SCSEP during this 1993-1994 program year. Six (6) enrollees entered unsubsidized employment. Two are working at hotels in Wailea earning \$11.50 an hour, one placed with Pukalani Foodland bakery making \$7.50 to \$14.50 per hour, and we were able to secure a landscaping position at the Cameron Center.



SCSEP enrollee Teofilo Gagton trains to be a Park Attendant with his supervisor Solomon Naeole.



Vivian Watanabe, SCSEP enrollee, gains work experience at the Maui County Mental Health Center.

## Employment and Training

### JTPA, Title II-A Older Individuals Program

The Older Individuals Training Program provides job training, counseling, and related employment services to economically disadvantaged individuals age 55 years and older to assist them in securing unsubsidized jobs preferably in the private sector. As of January of this year we have implemented the Individuals Services Strategy (ISS). The ISS will be a individually focused, client driven ser-

vice plan that reflects the key role which the client must play in moving towards self-sufficiency.

A total of nine individuals were enrolled into the OIP Program. All participants were dual enrolled into SCSEP. Three were placed into jobs in the private sector. The Cameron Center hired one of our participants to do landscaping.



Damain Balco, SCSEP enrollee, is working for the Maui County Parks & Recreation Dept. at the Maui War Memorial Stadium.



SCSEP enrollee Leonila Reyes, provides care for seniors at the Maui Adult Day Care Center in Puunene.

### Employment Training and Job Placement Services for Low-Income Persons

Program services are available to assist low income individuals with employment training and job placement. This program will coordinate services within MEO and other social service agencies to eliminate the barriers which prevented them from meeting the goal of economic self-sufficiency.

The major program components will involve marketing and recruitment, client intake, eligibility

determination, assessment of vocational skills and resources, supportive services, counseling, career planning, development of pre-employment, occupational skills training, and direct placement into jobs.

To qualify for the program, at least 70% of the individuals shall meet the DHHS Federal Poverty Guidelines. MEO provided 123 individuals with program services this past year.



Molokai SCSEP enrollee Pilar Villaros, performs receptionist duties as a part of her training.



OIP participants study English as a Second Language as preparation for employment.

## Energy

### Weatherization Assistance Program (WAP)

The Energy Division provides services for low income families and individuals on Maui, Molokai and Lanai through two programs. The first program is the ongoing Federal funded DOE Weatherization Assistance Program known as the WAP program. The program provides direct assistance in purchasing and installing heat pumps, solar heaters, clock timers, and insulation jackets to wrap the hot water heaters in order to conserve energy and thereby lower clients monthly cost of gas and/or electricity.

This program through education encourages the use of energy conserving technology and appliances in the home and increased awareness

for the need to conserve energy.

Eligibility for the project pertains to households who meet 150% of the State poverty guidelines qualify for the devices. Estimated savings for clients receiving jackets and timers are 12%, heat pumps average 20%, and solar heaters at 25-30%. This current year, we completed 100% of our annual goal for Maui County which consist of 75 jackets, 40 timers, 46 heatpumps and the implementation of a pilot project on Molokai of 30 solar heater installations. MEO was honored by having Ms. Jeanne Van Vlanderan, DOE/WAP Director, conduct a visitation on Molokai reviewing energy saving devices specially the solar heaters.



Maui Energy staff Fred Baisa and Evelyn Wilson.



Molokai Energy Staff Doreen Galam

### Low Income Home Energy Assistance Program (LIHEAP)

The second program referred to as LIHEAP, has been coordinated through the State Department of Human Services for the last 11 years. LIHEAP being a temporary program, starts in February and lasts for two months.

Traditionally, the LIHEAP program has provided assistance to only those low-income households who in an Energy Crisis Intervention (ECI) situation which pertains to the termination of gas or electric service if payment of bill is not met. As

of 1985, the program became two fold by including Energy Credit whereby households needing temporary assistance to afford the cost of their utility bill. Both Crisis and Credit composite payments are paid by the State Coordinator of the program directly to the utility company involved and credited to the individuals account. This year's accomplishments, the best ever, assisted 1,029 clients of which 168 received ECI assistance and 861 received EC support.



Happy client pointing to newly installed heat pump.



Doreen Galam with solar heater client on Molokai.

## Language Arts Multi-Cultural Program (LAMP)

For six years, MEO has managed the LAMP program at Kilohana Elementary School located on the east end of Molokai. The intent of this supplemental education program is to provided and improve LAMP students' language, listening, speaking, reading, and writing skills through specific strategies designed to meet the needs of the children.

These strategies are accomplished by providing tutoring in the 3rd and 4th grade DOE classrooms during the morning hours. Providing supplementary activities during the after school LAMP period that utilize the student's experiences as to motivate and expand their interest to talk, read, and write about the world as we live.

LAMP objectives are to have 80% of the students attain 4.5 on the SAT Writing Assessment, 70% of the students will gain a minimum of one Normal Curve Equivalent (NCE) point per year as measured by the Stanford Achievement Test, Reading Comprehension subtest, 70% of the students will attain 4.5 or gain one point on the Keaukaha Oral Language Test, and 80% of the students will make a minimum improvement of at least one point in their attitude towards themselves and their peers.

The program also provides an increase awareness, appreciation, and respect for all cultures and customs by helping students to learn more about and to understand their own culture and

customs. To accept other cultures by becoming more knowledgeable and to stress similarities and minimize differences among the cultures.

An important and intricate part of the program is the need for parents to set priorities for their children and their personal involvement in the program. This past year has been extremely challenging and difficult for our staff, school principal, parents and students. We were unable to maintain a consistent student enrollment count of 26 for the program. The lack of consistent enrollment and regular attendance had a negative impact resulting in poor test results in reading, writing and speaking objectives. Our staff tried their very best by providing 636 individual parent/teacher meetings, 119 telephone conversations, 626 follow up calls regarding homework, attendance, behavior and for being receptive to many suggestions. They made 1,381 contacts reaching out to 43 parents.

Areas of student interest and involvement included history and geography of the Hawaiian Islands which featured a session on the art of scrimshaw, how the yellow hibiscus was selected as the State flower, and writing improvement through the use of thank you notes.

The students who attended class regularly were treated to a year end excursion trip to Oahu visiting the Bishop Museum, Atlantis Submarine, and the Waikiki Aquarium.



Excursion to Pu'u 'O Hoku Ranch learning about dairy and cattle ranching



Students visit an old Hawaiian heiau.

### JTPA 402 Migrant and Seasonal Farmworker Program

This employment and training program experienced another banner year of more participants than anticipated as a result of the continued influx of Hispanic Migrant and Seasonal Farmworkers. A total of 165 participants were enrolled in the program. Our plan was 150 participants. A total of 101 participants were placed in unsubsidized employment. Further, the average wage placement of our participants was \$7.69 at placement during a time of high unemployment in Hawaii and the Nation. These successes serve to confirm MEO's mission statement "To Help People Help Themselves." Our intensive case management approach with our participants, which included successful counseling, promotes the importance of education, English competency and acculturation.

The goals of the program are to provide low-income farmworkers with opportunities for quality job-training, work experience, vocational education, and emergency assistance, to break the cycle of seasonal and migrant farmwork and place the client in long-term, unsubsidized employment which will result in self-sufficiency.

To qualify, program participants must have 50% of earned income in farmwork, a minimum of 25 days in farmwork, earned at least \$400 in farmwork within the previous 24 months prior to enrollment, and fall within the federal "lower living standard income level" guidelines.

Dependents of qualified participants are also eligible for services. The program is available to farmworkers throughout the State of Hawaii.



*Migrant and Seasonal Farmworker Staff were the beneficiaries of training in migrant law from the Centro De Asuntos Migratorios of California*



*Diane Mull, Executive Director of the Association of Farmworker Opportunity Programs provides training to the MSFWP staff.*



*Lahaina BEAT Class received sewing lessons taught by instructors and learned to sew children's clothes.*



*Basic Education Acculturation Training (BEAT) participants attend ESL classes as an activity provided by the program.*

### JTPA 402 Migrant and Seasonal Farmworker Program

MEO's commitment to education results in our partnership with the State Department of Education's Adult Education Program. Through this relationship, MEO's 402 program has been able to exceed our planned enrollment in classroom training which was 143% of plan. The majority of the 165 participants we served this past year experienced at least limited English proficiency, and were enrolled in English as a Second Language classes provided by the Adult Education Program.

Acculturation activities are a key component of our program and are paramount to a partici-

part's successful transition into the Hawaiian lifestyle. A variety of activities took place throughout the year. Among them were trips to the Fourth of July Fireworks, Annual Makawao Rodeo and Parade, Maui Jaycee Carnival and an excursion to the beautiful Hana, Maui. Numerous fiestas, dances and soccer tournaments allow participants to socialize, share their culture, and make new friends. Several weddings of our Hispanic participants to local residents, and baptismal parties verified the permanency of the Latino migration to Hawaii.



*BEAT participants at graduation after successfully completing their training.*



*Gladys Baisa congratulates and presents certificates to the BEAT participants.*



*Even the children benefitted as child care was provided to assist parents while they attended classes.*



*Participants of the BEAT Program had the opportunity to tour and observe hotel operations as part of their training.*

## MEO Agribusiness Projects

### Senior Herb Gardening

This past year was a great challenge for the Senior Herb Growing Project because of intense mainland competition. Our growers produced plenty of herbs but were unable to sell all of them. Our principal buyer, who was 60% of our annual sales, stopped buying in January of '94, our peak sale month.

MEO began selling very successfully in the Massachusetts Bay State Market Terminal 10 years ago with no competition. MEO was the only producer selling basil in the Boston wholesale market. Little by little other herb growers from around the country and the world entered into the same wholesale market in direct competition with our herbs. Although our quality was excellent, other factors such as packaging, herb variety, delivery time, and lower prices were competing for our market niche. This last January of 1994 we lost our niche in the Boston wholesale market.

After many meetings with our herb area senior coordinators, it was decided to rebuild our wholesale market niche. The following plan was developed.

1. More little wholesale markets are going to be opened because MEO knows herb sales can't



The Herb Advisory Committee confers on the new proposed orchid project.



The fellowship shared by senior herb growers keeps them working at this difficult project.

depend on one principal buyer. Our target is to have 8-10 buyers on the mainland with only one or two of large percentage buyers. By increasing our herb markets our herb sales will also increase.

2. Recruit new growers and bring the old growers back who left because of the market downturn. Many growers were discouraged in not being able to sell their herbs.

3. We would begin selling an herb package comparable in size, weight, and variety to our competition. For the last few years there had been no change in our packaging.

4. Scheduling of our air flights would improve. Using various airlines improves our delivery time to designated cities.

### Senior Orchid Gardening

There is good news for the coming year. MEO is encouraging backyard growing of orchids, particularly Dendrobiums. One of the bright spots in Hawaiian agriculture is the wholesale of orchids. Seniors have been growing orchids for years in their backyard without selling them. We are attempting to organize and develop this nascent orchid industry. Orchid experts on the island are willing to help in this new project.

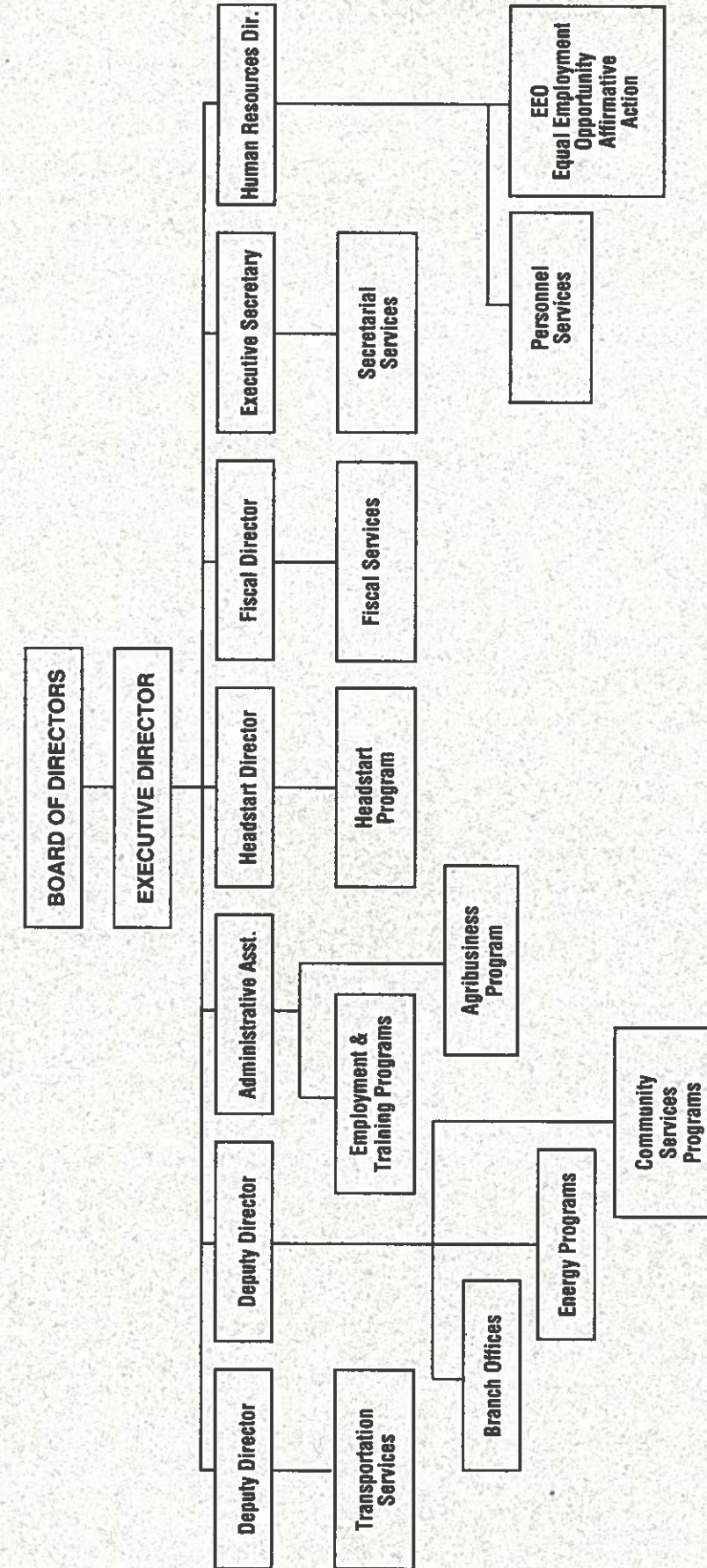


Herb grower Ichiro Takahashi carefully weighs tarragon being bagged for shipment to the mainland.



Meticulous grading and sorting have given our herb products a superior reputation in the marketplace.

## MEO ORGANIZATIONAL CHART



### KEY

Transportation Services: Transit operations on Maui, Molokai and Lanai, Sugar Mill Auto Care.  
 Branch Offices: Hana, Molokai, Lanai, and Lahaina, Area Councils on Molokai and Lanai, and the Language Arts Multi-Cultural Program on Molokai.  
 Energy Programs: Weatherization Assistance Program, Low Income Home Energy Assistance Program.  
 Community Services Programs: Senior Clubs, Red Card Program, Legal Services, Surplus Food, Homeless Programs, Family Development/Case Management, Chore Services, Outreach & Referral.  
 Employment & Training Programs: The Migrant & Seasonal Farm Worker Program, OCS Employment & Training Program, JTPA Older Individuals Program and Senior Community Service Employment Program.  
 Headstart Program: Headstart classes on Maui and Molokai.  
 Agribusiness Program: Herb Gardening and related activities.  
 Human Resources: Personnel Services & Equal Opportunity/Affirmative Action

## MEO Senior Staff

**Gladys C. Baisa**  
*Executive Director*

**William Bates**  
*Deputy Director*

**Donald Medeiros**  
*Deputy Director*

**Mona Kailiponi**  
*Fiscal Director*

**Amanda Martin**  
*Administrative Assistant*

**Annette Spenser**  
*Executive Secretary*

**Carnation Nanod**  
*Head Start Director*

**Bazie Brandt**  
*Employment & Training Director*

**Lyn McNeff**  
*Education Coordinator*

**Loreta Pacubas**  
*Community Services Director*  
*MSFWP Coordinator*

**Fred Bicoy**  
*Molokai Branch Director*

**Agnes Groff**  
*Transportation Manager*

**Irene Kaahanui**  
*Molokai Office Manager*

**Dan Flavin**  
*Agribusiness Director*



MEO's busy fiscal staff takes time out for a smile.



Annette Spenser, Executive Secretary and Natalie Akuna, Administrative Secretary (MEO's Secretarial Staff in the main office) with Ora Latham, Community Service Case Manager.



Molokai Branch Manager Fred Bicoy.



Molokai Office Manager Irene Kaahanui.

## Perfect Attendance

MEO Employees were recognized at the annual MEO Perfect Attendance dinner for having used no sick leave during calendar year 1993. Listed below are the employees recognized at the event and the number of years they have achieved perfect attendance.

**Main Office**      **No. of Years**

Gladys Baisa	8
Bazie Brandt	1
Mona Kailiponi	4
Sylvia Keyhani	1
Debra Lorenzo	2
Marcy Maguddayao	1
Donald Medeiros	2
Annette Spenser	17

**Chore Service & Community**

**Service**

Daniel Flavin	8
Loreta Pacubas	2

**Maui Head Start**

Palma Cabos	1
Roberta Higgins	3
Pasita Pladera	5
Sheri Rourke	7
Leona Stephens	1

**Maui Transportation**      **No. of Years**

Leona Carpio	1
Lousiana Chang	1
Pacifico Estrada, Jr.	1
Carolyn Freitas	2
William Gearon	3
Agnes Groff	7
Elizabeth Kauai	2
Susan Souza	7
Colette Weston	1

**Molokai Head Start**

Lydia Joao	3
Rebecca Kamakeeaina	6
Carnation Nanod	10
Lovena Makekau	2

**Molokai Transportation**

Hannah Davis	6
Julie Ann Kuoha	1



Employees that achieved perfect attendance for the year were recognized with a special Seafood Buffet at the Kapalua Bay Resort.



Grand Champion Annette Spenser, with 17 years of perfect attendance, is congratulated by Mary Hofmann MEO Board Personnel Committee Chairman.

### MEO Funding Summary 1993-1994

<u>GRANTS</u>	<u>TOTAL BUDGET</u>
1. STATE OCS GRANTS:	
TRANSPORTATION	\$ 423,225
FAMILY DEVELOPMENT AND CASE MANAGEMENT	319,770
WEATHERIZATION ASSISTANCE PROGRAM	259,724
CSBG-FEDERAL	298,589
EMPLOYMENT AND TRAINING	59,202
HEAD START	38,200
HOMELESS - MCKINNEY ACT	12,620
2. OTHER STATE GRANTS:	
CHORE SERVICE - TITLE II	112,953
STATE HOMELESS EMERGENCY PROGRAM	106,604
LANGUAGE ARTS MULTI-CULTURE PROGRAM	50,520
OHA - HEAD START PARENTS LITERACY PROGRAM	17,237
LIHEAP	8,403
TEFAP	1,810
DHS - JOBS	119,040
3. COUNTY OF MAUI GRANTS:	
TRANSPORTATION	1,273,619
HEAD START MCC BUILDING FUND	100,000
HEAD START AFTER SCHOOL CARE	182,500
COUNTY CHORE SERVICE - MCCOA	69,125
TRANSPORTATION - MCCOA	49,350
MAUI COUNTY SUMMER PRE-SCHOOL PROGRAM	80,000
ASSISTANCE TO NEEDY INDIVIDUAL GRANT	173,000
4. FEDERAL GRANTS:	
HEAD START GRANT	891,900
HEAD START IN-KIND	222,975
MIGRANT & SEASONAL FARMWORKER PROGRAM	292,220
SENIOR COMMUNITY SERVICE EMPLOYMENT PROGRAM	150,340
SCSEP IN-KIND	30,456
TRANSPORTATION - SECTION 18 (FTA)	153,791
TRANSPORTATION - ISTE A - SECTION 18 (FTA)	450,000
JOB TRAINING PARTNERSHIP - OIP	12,124
5. OTHER TRANSPORTATION PROGRAMS:	502,979
6. PRIVATE FUNDING SOURCE:	
CHRISTIAN LASSEN ALOHA FOUNDATION	58,450
HAWAIIAN COMMUNITY FOUNDATION	23,000
7. INCOME PRODUCING VENTURES:	
HERB GARDENING VENTURE	75,000
NA KEIKI HAUOLI DAY CARE CENTER	42,500
MISCELLANEOUS FUND RAISING ACTIVITIES:	56,800
<b>TOTAL FUNDING</b>	<b>6,718,026</b>

### 25th Anniversary Lahaina-Honolua Senior Citizen Club



Lahaina-Honolua Senior Citizen Club President Lawrence Minami is congratulated by Mayor Linda Crockett Lingle and MEO Exec. Director Gladys Baisa



Mayor Linda Lingle and Gladys Baisa get ready to entertain the seniors with the hula "Puamana."



Seniors celebrating their birthdays in the month of May were honored at the party.



On behalf of the County of Maui, Mayor Lingle presented Mr. Minami with a congratulatory certificate.



President Minami was presented with a plaque from MEO commemorating his 10 years as Club President.



Charter members were also given special recognition and fruit baskets from MEO.

### CHRISTMAS AT MEO



*Executive Secretary Annette Spenser loves Christmas!*



*Dan Flavin proudly displays the grand prize at the MEO Christmas Party, presented by Natalie Akuna.*



*"Marilyn Monroe" entertains delighted MEO Transportation Staff at their office party.*



*Elvis is alive and well!... ask Transportation Manager Agnes Groff!*



*OCS Director Merwyn Jones and Representative Mike White enjoy a Molokai Christmas Party.*



*Representative Maise Hirono tells jokes at the Molokai Christmas Party.*

### HIGHLIGHTS



*Retiring Molokai Branch Director Fred Bicoy receives a parting gift from Board Member Richard Abing.*



*Molokai Office Manager Irene Kaahanui presents Fred Bicoy with a parting gift from the staff.*



*Molokai staff listen attentively at the monthly general staff meeting.*



*Networking between programs are Olivia Riel of LAMP and Cynthia Luafalemana of Head Start.*



*Celebrity Pat Morita and Executive Director Gladys Baisa co-emceed the Annual Senior Fair.*



*Consultant Jackie Taylor trains staff to be indispensable assistants.*

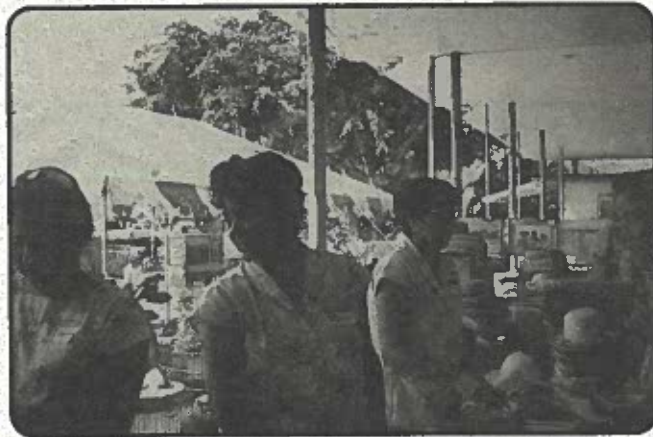
# HIGHLIGHTS



MEO staff sell MEO Cookbooks and chow fun at the Senior Fair fund raiser.



Mayor Lingle signs a proclamation on Employment for Persons with Disabilities.



Transportation staff sell soda to Senior Fair goers.



Do you recognize any of these zany characters who came to work at MEO on Halloween?



Selling soda for a fund raiser at the Senior Fair seems to be a fun experience for Transportation staff.



Amanda and Gladys had a wonderful time with IMUA staffmember Jane Hamel at the Annual Camp IMUA luau.

## MEO, INC.

P.O. Box 2122  
Kahului, Maui, Hawaii 96732  
(808) 871-9591  
FAX: (808) 871-2426

Office Hours:  
7:45am to 4:30pm  
Monday through Friday

### KAHULUI

Community Services 877-0626  
Head Start 871-8835  
Transportation 877-7651  
Fax 871-2171

### BRANCH OFFICES

Hana 248-8282  
Office Hours: 7:45am-2:30pm, Monday-Friday

Lahaina 667-9252  
Office Hours: 7:45am-12:30pm, Monday  
7:45am-3:30pm, Wednesday &  
Thursday

Lanai (Lanai City) 565-6665  
Fax 565-6722

Office Hours: 7:45am-4:30pm, Monday-Friday

Molokai (Kaunakakai) Office 553-3216  
Fax 553-3776

Office Hours: 7:45am-4:30pm, Monday-Friday  
Molokai Head Start 553-9805