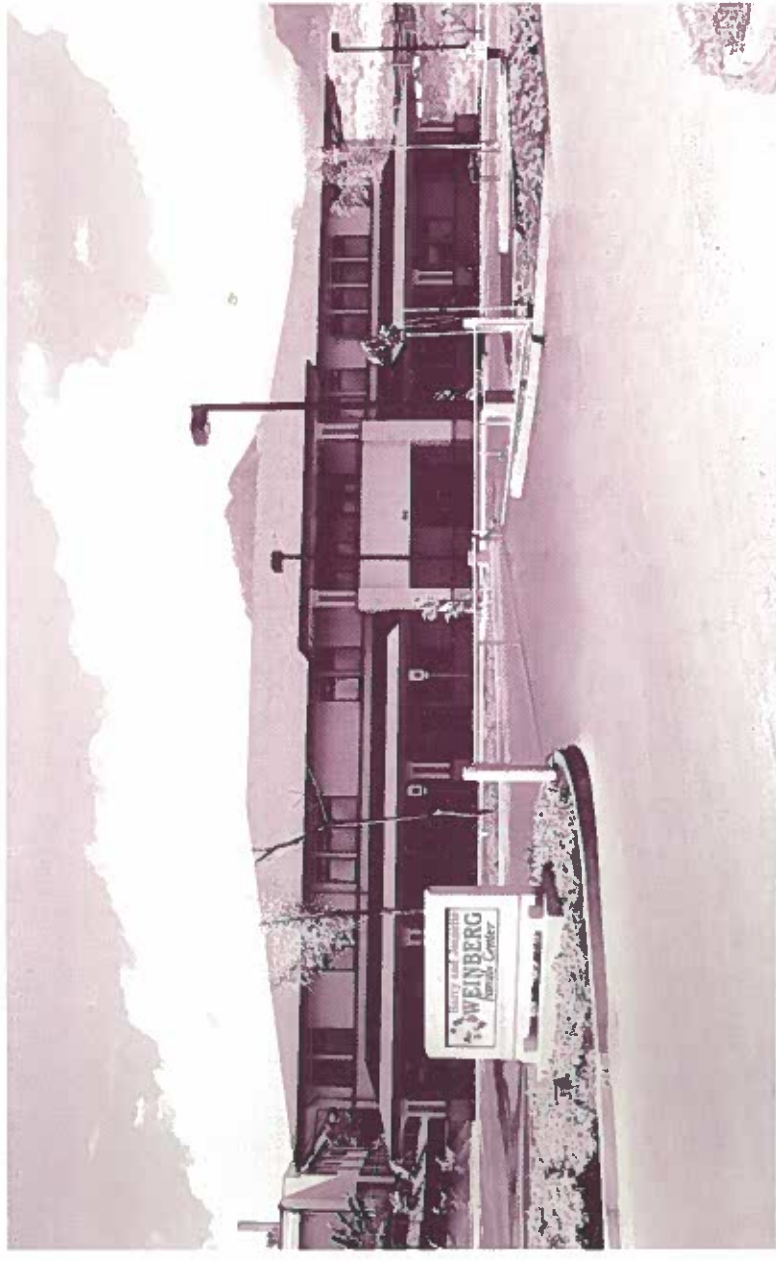


# Maui Economic Opportunity, Inc.

*Helping People Help Themselves*

1965-2000



July 1999 to June 2000



**MAUI ECONOMIC  
OPPORTUNITY, INC.**

99 Mahalani Street  
Wailuku, Maui, Hawai'i 96793

P.O. Box 2122  
Kahului, Maui, Hawai'i 96733  
Telephone: (808) 249-2990  
Fax: (808) 249-2991



**MAUI ECONOMIC  
OPPORTUNITY, INC.**

Maui Economic Opportunity provides tools to help people help themselves.

A ride to the doctor, to work or to school. Training to improve job skills and employability. Help to find a job. Surplus food to supplement a slim budget, and information about how to eat for health. Early childhood care and education that gives little ones and their families a head start in life. Learning life skills, earning money – and fun for teens. A helping hand with housework, so an elder can stay in their home. Advice and devices to save electricity and money. A friendly counselor to pull things together when the world seems to be falling apart. Small loans that make a big difference in starting a business. Vans that can carry grandpa or grandma in their wheelchairs to day care, or to the senior center to have lunch with old friends.

Basic tools for living, for earning, for self reliance: provided by MEO in the belief that, rather than giving people a fish, it is better to teach them how to catch fish for themselves.

What is MEO? .....	2
Letter from the President .....	3
Board Installation Banquet .....	4
Board of Directors .....	5
Executive Director's Message .....	6
Employee of the Month .....	7
Perfect Attendance and Cash for No Crash Award Winners .....	8
Transportation .....	9
Volunteers .....	12
Head Start .....	13
Community Services .....	17
Opening of Harry & Jeanette Weinberg Family Center .....	19
Energy .....	20
Employment and Training .....	21
Microenterprise .....	24
MEO YouthBank .....	26
MEO Organizational Chart .....	28
Funding Summary .....	29
MEO Senior Staff .....	30
Activities .....	31
Senior Activities .....	32

**M**auui Economic Opportunity, Inc. is a private, non-profit Community Action Agency. The agency is currently in its 35th year of providing an enormous array of service annually to over 19,000 low-income people, elderly, children and youth, persons with disabilities, immigrants, other disadvantaged persons, and the general public throughout Maui County and the State of Hawai'i.

The Mission of MEO is "to help the low income, elderly, children and youth, persons with disabilities, immigrants, refugees, other disadvantaged persons, and the general public."

Maui Economic Opportunity, Inc. has offices located throughout the Island of Maui at Wailuku and Kahului in central Maui, and Hana on the east side of the island. Additional offices are located in Lana'i City on the island of Lana'i and at Kaunakakai on the island of Moloka'i.

MEO manages a vast array of services designed to meet the needs of its customers. We manage the only quasi-public transportation program in Maui County, carrying the elderly, low-income, persons with disabilities, youth, Head Start children, and the public, seven days a week up to 18 hours a day. MEO Head Start, an award winning nationally recognized program, provides services to 281 children through 13 centers, on the three islands of Maui, Moloka'i, and Lana'i. The MEO YouthBank provides opportunities for youth age 14-26 through its AmeriCorps and Kamalama programs to work, to learn, and to prepare for their future. Our Community Services staff is fully dedicated to work with tough situations in the lives of individuals, doing job placement and retention, providing support services, working with employers, and meeting emergency needs. MEO's Economic Development Program has formed its own non-profit arm as a Community Development Funding Institution in order to access capital and provide loans to small businesses, thereby creating jobs and boosting the economy of the community.

MEO is managed through a Board of Directors, representing the Private, Public, and Government sectors of the community. The Board is recognized throughout the State as leaders in the service field.

The core value of all our activity remains that of serving the less fortunate to the best of our ability. We are honored to have that opportunity.



**MAUI ECONOMIC OPPORTUNITY, INC.**

P.O. Box 2122  
Kahului, Hawaii 96733  
Telephone: (808) 249-2990  
Fax: (808) 249-2991



Rose Marie H. Duey  
President

June 30, 2000

Dear Friends,

On behalf of the Board of Directors of Maui Economic Opportunity, Inc., it is my pleasure to extend a warm "Mahalo" for your continued support and dedication in achieving our goals for the new "Millennium".

The many services provided to our community by MEO in the areas of transportation, training, youth, Head Start and micro enterprise continues to grow with much success. Among our accomplishments is the successful move of all departments to the MEO Family Center. With the help of the Building Committee under the supervision of Board Member, Jim Whitehead and Managing Director, Don Medeiros, the transition went smoothly. More of our accomplishments are the expansion of our child care services to the remote rural area of Hana, the accreditation of our Child Care Head Program by the National Association for the Education of Young Children, and we successfully ran the Kaua'i Head Start Program.

With the guidance and leadership of the Executive Director, Gladys Baisa and the dedicated staff, MEO continues to meet the challenges and provide the services for the low-income, elderly, persons with disabilities and other disadvantaged residents in the State of Hawaii.

We thank Governor Ben Cayetano, Mayor James "Kimo" Apana, the members of the Maui County Council, the Federal and State Legislators, the Weinberg Foundation and the many dedicated volunteers for making MEO what it is today—a successful service organization committed to "helping people help themselves".

Aloha,

Rose Marie H. Duey  
President

**M**EEO program participants were invited to address the more than 140 elected officials, business leaders, community partners, employees and friends of MEO at the 35th annual Board of Director's Installation banquet.

Among the speakers was Allen Bromaghim, a former Welfare-to-Work participant who successfully completed the Transportation Department. Also addressing the event was Robert Mitnick, an entrepreneur from the Microenterprise program. Robert shared his success and expressed his gratitude for the assistance and guidance he received while starting his successful taro burger business.

YouthBank participants Danile Juario and David Johnston thanked the YouthBank program for its support and the many opportunities for growth that are provided to participants. Other invited speakers included Cathy Abulon, a Head Start parent and Policy Council member, and Larry Minami, senior club participant and former MEO board member.

Velma Santos wowed the audience with an eloquent installation of officers reminding each new board member "to be mindful and motivated while carrying out your duties as officers." Gladys Baisa gave a fond aloha and presented koa clocks to exiting board members Dean Fujii, Glen Fujimoto and Kathy Fujimori.

She then welcomed new board members Jersula Manaba and Gladys Brown.



Velma Santos prepares to install the MEO Board of Directors.



Installation of Board members at 35th Annual Banquet.

(As of June 30, 2000)

**GOVERNMENT SECTOR**

- Maui Councilmember John Enriques
- Maui Councilmember Riki Hokama
- Grant Chun, representing  
Mayor James "Kimo" Apana
- Rose Marie Duey, President representing  
Maui County Council
- Beatrice Kahanu, representing  
Maui County Council
- Brian Klaschka, Secretary-Treasurer representing  
Maui County Council
- Jim Whitehead, representing  
U.S. Senator Daniel Akaka
- Bill Wong, representing  
Hawai'i House Speaker Emeritus Joseph M. Souki

**RESIDENT SECTOR**

- Cathy Abulon, Head Start Policy Council
- Dean Fujii, Molokai Community Action Council
- Glenn Fujimoto, Molokai Community Action Council
- Rhonda Lincoln, Hale Mahaolu
- Mary Monden, East Maui Seniors
- Haruko Nakata, West Maui Seniors
- Frances Pagay, Lanai Area Council
- Rob Wead, Central Maui Seniors

**PRIVATE SECTOR**

- Dolores Bio, Maui Puerto Rican Association
- Joseph Franco, Jr., ILWU
- Gus Fuentes, Salvation Army
- Jeff Kuwada, Vice President, Maui Bar Association
- Alvin Nacua, Alu Like, Inc.
- Tony Ramil, Maui Filipino Council
- Jimmy Rust, Maui Contractor's Association
- Lynne Woods, Maui Chamber of Commerce

**VENTURE COMMITTEE**

- Sylvester Peros, Chairman
- Masami Fukuoka
- Louis Hao
- Lei Kihm
- Brian Klaschka
- Robert Mitnik
- Bard Peterson
- Jim Whitehead
- Bill Wong

**HEAD START POLICY COUNCIL REPRESENTATIVES**

- Cathy Abulon, Chair
- Geraldine Adolpho
- Richard Armijo
- Nicole Bailey
- Christal Baraoidian
- Fabian Buenrostro
- Michelle Clark
- Terri Jakubzak
- Beatrice Kahanu
- Leah Keohulua
- Karen Hue Sing Ledesma
- Gina Leval
- Henry Lindo
- Naomi Miller
- Lester Nakamoto
- Robin Swift-Rohrer
- Patricia Tholen
- Anita Tuppein

## EXECUTIVE DIRECTOR'S MESSAGE



**MAUI ECONOMIC  
OPPORTUNITY, INC.**

P.O. Box 2122  
Kahului, Hawaii 96733  
Telephone: (808) 249-2990  
Fax: (808) 249-2991

June 30, 2000

Dear Friends:

As we end our 35th anniversary year here at MEO, we continue to celebrate and enjoy the rewards of a dream come true for us this year, our new home, The Harry and Jeanette Weinberg Family Center. It was a long and very difficult struggle to identify a site for the facility, to secure the funding necessary, to do all of the planning and paperwork, comply with all of the legalities, deal with construction and relocation, organize and hold our Grand Opening MEO Family Fair and Dedication. Many events and noteworthy activities were undertaken during the past twelve months, but moving into our new home will be a day to remember forever.

As we look back on this year, we are once again filled with gratitude and aloha, for the people who have helped us accomplish what we have been able to do. Our funders, Federal, State, County and private, our Board of Directors, staff, volunteers, clients, network partners, business partners, suppliers, and the entire community have generously stepped forward many times to give of their time, talent, and treasury to enable us to do a myriad of things for our people. The spirit of aloha truly lives here and we cannot thank everyone enough for your support.

As we look ahead, many challenges remain. We will continue to strive for excellence in all that we do in partnership with all of you. Our mission of "helping people help themselves" remains our guiding light in all that we think, say or do.

Aloha and mahalo,

Gladys C. Baisa  
Executive Director



Gladys Baisa  
Executive Director

## EMPLOYEE OF THE MONTH

July 1999 - June 2000

The Employee of the Month program was started in January 1985 to recognize MEO employees for superior performance, promote morale and encourage the search for excellence among the staff. Employees of the Month are chosen by committees of their peers and awarded a day off of their choice, plus a \$150 cash award. Winning nominators also receive \$50. Each winner is featured in a short article submitted to the Maui News.



**JULY (1999)**  
Debra Spencer  
Lead Driver, Moloka'i



**JANUARY (2000)**  
Mae Koyanagi  
Administrative Secretary



**AUGUST**  
Agnes Groff  
Transportation Director



**FEBRUARY**  
Kanoelani Aiwohi  
Fiscal Clerk



**SEPTEMBER**  
Henrietta Mokiao  
Receptionist, Moloka'i  
Community Services



**MARCH**  
Herb Galbraith  
MIS Specialist



**OCTOBER**  
Don Medeiros  
Managing Director



**APRIL**  
Barbara Planesi  
Head Start Teacher



**NOVEMBER**  
Barry Gay  
Economic Development Director  
Head Start



**MAY**  
Claire "Lani" Pinto  
Family Advocate Aide



**DECEMBER**  
Harry Johnson  
Assistant Transportation Director



**JUNE**  
Annamaria Gerard  
Case Manager  
Community Services

## PERFECT ATTENDANCE

**M**EEO is honored to recognize the following employees for their perfect attendance and no accidents in 1999.

1 YEAR	2 YEARS	3 YEARS	6 YEARS	10 YEARS
Ken Hunt	James Crowe	Paulene Santiago	Lyn McNeff	Mona Kailiponi
Harry Johnson	Barry Gay	Williette Doong	Debra Spenser	
Wayne Nahooikaika	Wilbert Torricer	Pacifico Estrada	Victorio Agtarap	14 YEARS
Harold Rames Jr.	Teresa Osorno		William Kalani	Daniel Flavin
Mary Ellen Viveiros	Elizabeth Pszyk	5 YEARS		
	Michael Sing	Mathilda Len Wai	7 YEARS	
			Debra Lorenzo	
			Palma Cabos	
			Julie Ann Kuoha	

## C A S H F O R N O C R A S H

Drivers who are accident-free in a calendar year are eligible for a monetary award based upon the hours worked and contingent upon availability of funds. Dispatchers, maintenance and administrative staff who drive MEO vehicles as part of their duties and responsibilities and who are accident-free in a calendar year are also eligible for 50% of the monetary award.

### MINIMUM 1600 HOURS

Karen Agsalog	Victor Agtarap	Rosendo Ancheta Jr.	Trinidad Cabacungan	Alma Castellanos
Louisiana Chang	Darrell DeMello	Pacifico Estrada Jr.	Laura Freitas	Sherry Freitas
Bertha Grijalva	Agnes Groff	Joseph Inciong	Harry Johnson	Darlene Kahihikolo
Dora Kahookele	Annette Kailihou	Andrea Kamae	William Kalani	Zilpah Kaimiola
Mary Kaiwi	Trixy Kapoi	Mary Kealoha	Julia Kekona	Gretel Koko
Julie Kuoha	Chad Lee	Mattie Len Wai	Florynda Martin	Stella Medeiros
Kevin Moats	Kauokalani Moikeha	Charlene Montalvo	Janice Montalvo	Wayne Nahooikaika
Lenora Peleholani	William "Chris" Price	Elizabeth Pszyk	Carmen Ragudo	Harold Rames Jr.
Charlene Roman	Dell Finn Sado	Leona Salomon	Francine Santana	Michael Sing
Laurie Kaukini Smith	Cathy Souza	Susan Souza	Debbie Spencer	Stephanie Torricer
Crystal Vares	Gwen Vinuya	Colette Weston		

### MINIMUM 900 HOURS

Evangeline Ellis	Norma Fernandez	Calvin Kong	Myra Piligrin	Denise Prest
Mona Pulido	Irene Puha-Yoakum	John Vierra III		

### LESS THAN 900 HOURS

Clifton Mckenzie
------------------

## TRANSPORTATION

**A** day in the life of MEO Transportation begins at 4:30 a.m. when the morning dispatcher arrives to open gates and begin operations for the day.

MEO is currently operating with a fleet of 74 vehicles countywide, ranging in capacity between 3 and 45 passengers, of which 33 are wheelchair accessible and 1 gurney capable, we have concluded this year with an aggregate trip count of 337,242 passenger trips; attaining 107% of our goal in passenger trips for the program year.

**5:00 A.M.** - Passenger Assistance Technician (PAT) drivers as well as regular drivers are pre-checking their 48 item vehicle checklist. This checklist insures a safe operating vehicle for the day's activities.

Head Start drivers are enroute to pick up children from their residence to attend a total of 13 federally funded Head Start centers throughout Maui County. Each Head Start driver builds a special relationship with the parent(s) and children to develop a common ground of trust and assurance that their child will be transported to and from their residence in a safe and comfortable environment.

**7:30 A.M.** - The Rural Shopping Shuttle is in the process of picking up passengers from the rural areas of Maui for transportation to the Central Wailuku/Kahului corridor. The shuttle also operates within Lanai City and on Molokai taking residents from Maunaloa, Hoolehua, and East End to Kaunakakai. Twice weekly, people from the most rural areas on Maui (Hana, Keanae, Pauwela, Haiku, Paia, Makawao, Olinda, Pukalani, Kula, Kihei, Waihee, Waiehu, Maalaea, Lahaina, Kahana, Honokowai, and all points in between) are transported from their homes to the Central corridor of Wailuku/Kahului.

The Rural Shopping Shuttle allows people to do their banking, go to a doctor, keep rehabilitation appointments, access State and County services, attend VA programs, go shopping for groceries or fulfill other needs that can only be met in town. This is a County funded project and while it has no fee for service, donations are encouraged and accepted.

**8:00 A.M.** - Ka Lima O Maui and Hale Hauoli clients are being dropped off at the Cameron Center. Senior clients are getting ready to be picked up from their residence and await their morning rides to Hale Makua for Day Health programs or to Maui Adult Day Care for activities. Both programs receive county funding and are available at no cost to the rider.

Nutrition participants are being picked up from their residence enroute to County sponsored nutrition sites throughout Maui. Leisure passengers are being picked up at residences and sites enroute to the Kaunoa Senior center for the day's activities.

The Public Shuttle is well on its way to pick up the general public from the central parts of Maui (Kahului and Wailuku). Often the shuttle exceeds its 25-passenger capacity by its third stop. This service



Returning from a visit to the doctor.

## TRANSPORTATION

takes people between the points of Kahului and Wailuku from 7:50 a.m. to 5:25 p.m., Monday through Saturday, with the exclusion of holidays. This program generated 59,164 passenger trips this year.

**1 0 : 3 0 A . M .** - Passengers on the Shopping Shuttles are being taken from doctor appointments to commercial centers.

PAT drivers are taking clients to medical and rehabilitation appointments around the island. For many of these clients there would be no other way for them to meet with medical specialists that come from off-island for consultations.

**1 2 N O O N** - Head Start half-day classes are finishing and buses are returning children home to their families. Our parents are fortunate to be in the only Head Start program in the State of Hawaii to offer bus transportation.

**1 2 : 3 0 P . M .** - The Rural Shopping Shuttles originating from outlying communities are returning passengers to their homes.

This year, the Rural Shopping Shuttle Countywide generated 26,822 passenger trips. Persons utilizing this Shuttle tend to be on a low fixed income with very limited discretionary funds. The majority are seniors on Supplemental Social Security benefits, and include disabled clients with low incomes and single parent families.

**1 : 0 0 P . M .** - Employment for Disabled clients are finishing work and are being returned home. This unique specialized program providing transportation-to-work for persons with disabilities generated 4,175 passenger trips by the end of this fiscal year. By County contract, riders of this service pay .50¢ for each trip.

**2 : 0 0 P . M .** - The County currently utilizes MEO to transport Ka Lima O Maui clients from their homes to programs and services. This year, Ka Lima O Maui generated 6,854 passenger trips. The State of Hawaii also contracts with MEO to transport clients belonging to the Hale Hauoli program at the Cameron Center.

**2 : 1 5 P . M .** - Shuttle buses are waiting to transport youth, ten years old and above to youth activities at the Youth Centers and sports complexes. For some parents, MEO is the only means they have of getting their children to these activities and home again. As of the end of this fiscal year, Youth Transportation generated a total of 103,984 passenger trips Countywide.

**2 : 3 0 P . M .** - The County also contracts with MEO to transport seniors to Maui Adult Day Care. This facility allows families to have their elderly family members participate in activities that stimulate their minds and bodies. These clients are very fragile and cannot remain at home alone while their families are at work. The Day Care program generates on average 8,200 passenger trips annually.

**3 : 0 0 P . M .** - Head Start classes for full day centers are closing and drivers are returning children to their homes. PAT drivers are also busy returning dialysis clients from their treatment appointments



MEO Transportation at work in Hana.

## TRANSPORTATION

to their homes and residences. Often, MEO is the only means for these clients to attend medical appointments.

**3 : 3 0 P . M .** - Clients on the Ala Hou program are just being picked up for evening appointments. This County funded program allows qualifying persons with disabilities to travel from outlying communities at a cost of \$1.00 per trip. This year the program generated 18,419 passenger trips for the County of Maui.

**5 : 0 0 P . M .** - The Youth Transportation program is returning children from the Youth Centers to their home districts at this time, giving their families the piece of mind of knowing their children are safe.

**6 : 0 0 P . M .** - The return of clients from the Dialysis clinic is ongoing. Most of the transportation staff has left for the day leaving just a small crew to finish the day's operation.

**7 : 3 0 P . M .** - The evening dispatcher is busy getting keys and schedules ready for the next day's operations. Gates are being locked and buses are prepared. This will continue until the last bus pulls in at 8:45 p.m. Although there are no late runs tonight, buses have been known to come in at midnight after excursions for senior clubs—but it's been another normal day in the life of MEO Transportation.

**SPECIAL EVENTS.** In addition to our regular service, MEO provides transportation to many special events during the year. Some of these were: the Mercedes Championships Golf Tournament at the Kapalua Plantation Course. MEO operated shuttles for the event transporting over 5,000 spectators. On January 25, 2000, nearly 450 seniors utilized 24 buses for transportation to the Kaunoa Senior Center's Millennium Party at the Westin Maui Hotel at Kaanapali.

Throughout the year, MEO assisted the County of Maui with the Wailuku Town Main Street celebrations. These included the Chinese New Year's Celebration on January 29th, the Japanese Matsuri celebration in June, the Somos Amigos Hispanic/Portuguese celebration in September, and culminated with the Wailuku Town homecoming in October.

In February, MEO in conjunction with the Mayor's Office and the Maui County Department of Business and Economic Development provided transportation for the groundbreaking of Micro Gaia's new facility at the Maui Research and Technology Park. The facility is an effort by the County to attract new technologies and business to enhance Maui's economy.

To assist the University of Hawaii, MEO transported students attending the annual Conservation Awareness Program on Maui. The Program brought people from throughout the state to participate in activities at Maui Community College and at the Maui Land and Pine Company's Honolua field office.

On September 29, 2000, MEO transported over 485 passengers to the Maui County Fair for the disabled, utilizing twenty-four (24) buses. Participants came from as far as Kula hospital, Kaunakakai, Molokai and Kalaupapa, Molokai. There were 1,400 in attendance including persons with disabilities, volunteers, entertainers, security personnel and food preparation staff. This unique event was free to all in attendance and MEO donated its services to this special event.



Arriving at Maui County Fair for the disabled.

**V**olunteers have always played a significant part in the successful operation of organizations like MEO. Our surplus food distribution would not exist without the help of volunteers and low-income seniors. Our Seniors would not be able to afford legal advice if it were not for volunteer attorneys.

It has become an MEO tradition to honor and recognize devoted volunteers on Valentine's Day, a special day to express love and gratitude for the countless hours that volunteers have shared in reaching out to the poor and needy.

The 12th Annual Valentine's Day Volunteer Luncheon was held on February 14, 2000 at the Maui Tropical Plantation. Gladys Baisa, Executive Director began the event with a welcome message. Volunteer Lanky Nagata was MEO's "Volunteer Hall of Fame" awardee. He was cited for his loyalty, dedication and hard work at the surplus distribution site every third Wednesday of the month.

**FREE LEGAL CLINIC.** Attorney Larry Ing and associate Attorney Jeff Kuwada continue to provide free legal advice to seniors, 60 years and older. This year 178 low-income seniors were assisted with free legal services. The services provided include wills, trusts, property transactions and consultation.

**SURPLUS FOOD.** The Temporary Emergency Food Assistance Program makes surplus agricultural commodities available to low-income people. The U.S. Department of Agriculture (USDA) is responsible for purchasing and packaging the TEFAP commodities and for transporting these items to designated delivery points through the United States. In Maui County, MEO, Inc. is the designated delivery point. Through the hard work of a group of dedicated volunteers called "MEO's Helping Hands," low-income, homebound, isolated, homeless and hungry receive food commodities every third Wednesday of each month.

**SENIOR "RED CARD" DISCOUNT.** MEO contacts local merchants and businesses to see if they are interested in participating in the Red Card Senior Discount Program. To date over 100 outlets on Maui, Moloka'i and Lana'i are active participants, offering discounts to seniors 60 years of age and over. Discounts range from waiving the 4% sales tax at many stores and businesses to 10%-15% discounts at restaurants and drug stores.

**Volunteer Hall of Fame**

- Lawrence N.C. Ing - 1989 to 1990
- Violet E. Przyk - 1990 to 1991
- Ichiro Takahashi - 1991 to 1992
- Harold Shimoda - 1992 to 1993
- Virginia Freitas - 1993 to 1994
- Jim Whitehead - 1994 to 1995
- Yukiko Kanoholani - 1995 to 1996
- Frank Lee - 1996 to 1997
- Beatrice Kahanu - 1997 to 1998
- Lawrence N.C. Ing - 1998 to 1999
- Lanky Nagata - 1999 to 2000

**"NANA I KE AO"**

*"Keeping an Eye to the Future. . ."*

**T**he Year 2000 carries the MEO Head Start Program into a new Millennium.

This year also marks the 35th anniversary for the MEO Head Start Program, and what an exciting year it has been!

The MEO Head Start Program concentrates on promoting exceptional services to all aspects of family life, from families who work part-time or attend school or trainings to providing full-day services for families who are employed full-time. Six (6) centers provide part-day services, from 7:30 a.m. to 12:00 p.m., seven (7) centers provide full day services, from 7:30 a.m. to 3:00 p.m.

The MEO Head Start Program serves children from 3-5 years of age of all races, gender, and nationalities, with federal government guidelines requiring the child's State birth certificate, and income verification from the previous year. There is also a Selection Criteria that is required to be read and signed by the parent or guardian at the time of filling out the enrollment forms. It takes 3-4 weeks to be processed (providing all legal documents are provided with the enrollment form), and the parent is notified by letter if their child has been determined to be eligible for services. If they are, then all services are provided at no cost. Transportation is included provided the family lives on a route accessible by our MEO Transportation buses.

**ACCREDITATION.** Always keeping the focus on accreditation, we're proud to announce another facility has received the "mark of excellence," bringing our numbers up to a total of four accredited facilities out of 13 Head Start Centers throughout Maui County. With two more Head Start Centers in self-study and preparing for their chance to go through the process of receiving accreditation, we are elated at our progress.

This national recognition emphasizes the importance of the program's goals, to provide high quality service for the families and their children of Maui County, and targets our ultimate objective of National accreditation for all 13 Head Start Centers

**CURRICULUM.** Our unique curriculum also includes emphasizing quality service to families with children of disabilities or special needs, including those who come from high-risk environments, by providing hands-on services through our Transition/Disability Specialist. This service is included in both the full-day and part-day Centers, putting emphasis on Head Start's belief that all



Cathy Abulon - Head Start Policy Council Chair.



Playing and learning at the same time.



Kihei Center parents and children.

children benefit when the classroom includes a blend of children with various backgrounds and needs.

The MEO Head Start Program has also increased their Inclusion Program to four centers, joining Wailuku "B", Makawao "A", and Kihei "A" in a partnership first established in 1996 with the Department of Education working together to develop learning and socialization skills for it's Special Needs children. Through this networking, both the MEO Head Start Program and the DOE have provided valued support to the families and their children, giving them an added opportunity to enjoy this wonderful benefit.

The MEO Head Start Program continues to maintain a loyal "ohana" relationship with our neighbor island partnership, Lana'i's E Malama I Na Keiki O Lana'i, maintaining their count of 5 children that rely on our continuing services.

**K A U A ' I H E A D S T A R T .** In an exceptional challenge this year, the MEO Head Start Program accepted interim grantee status for the Kaua'i Head Start Program in August, 1999, initiating a pilot program for the State Personnel Registry, and providing support to 7 additional centers on Kaua'i from the 13 centers being served in



Laha'ina Center displays their banner.

Maui County. The curriculum implemented there was the same high quality service expected of the MEO Head Start Program in Maui County. The Kaua'i Policy Council was invited by MEO to Policy Council meetings, and experienced hands-on discussions with Maui County parents as they sought to improve conditions that would be beneficial for all Head Start Centers involved. It has been both a remarkable and a challenging year, and though our service to Kaua'i ended in June 2000, we were fortunate to be given the opportunity to serve our Garden Isle residents.

**A N E W H O M E .** The MEO Head Start Program also faced adjustment to MEO's brand new two-story building opened in August 1999, with only a week between moving in to celebrating it's grand opening. This move has been welcomed by the staff, the families served in the program and the community who had the opportunity to visit during the grand opening. A spacious waiting area now awaits new applicants, complete with sitting space and a host of toys, games, books, and "little people" tables and chairs for the young ones to enjoy while their parents fill out the required forms. Two private intake rooms are provided for confidentiality. These are furnished with comfortable cushioned wicker chairs and toys, games, and books for the kids. There is also a private conference room, a personal rest room for the child's use, and space enough to house the current 13 member staff. The building allows for ample space to implement a playground area on the side of the Head Start office.

Makawao Head Start says "everything is O.K."



**S T A F F E D U C A T I O N .** More and more employees are returning to school to meet requirements established by the Administration for Children and Families (ACF) Regional Office to have all teaching staff reach an AA, AS, or better by 2003. The MEO Head Start staff has become increasingly involved in self-improvement. Some have received their

AA's, others their AS's by enrolling in Maui Community College, or through studies with the University of Phoenix. Opportunities such as these open the door for a more educated and professional staff, keeping with the program's philosophy that post-secondary education will help our staff provide better quality service to the children and the families they serve.

The MEO Head Start Program also emphasizes Parent Involvement with an emphasis on new Performance Standards and program review instruments for the parents. This gives the parents an opportunity to learn more about the program, it's strengths, and what they can do to help in areas that need improvement.



Wailuku Head Start children.

**PROGRAM GROWTH.** There has been an increased demand from the community for our service. We are seeking an additional facility to be implemented in the Kahului area. The MEO Head Start Program has also submitted a grant request to the regional office for funds to purchase two mobile trailers to be situated on Kihai Elementary School property, allowing the school to utilize the modules we have been using for the expansion of their own curriculum. Though we have been approved for these funds, utilization will

not be in effect until the end of March 2001.

An increase in funding has allowed us to once again provide full-day classes to our Maui Community College Head Start Center. After budget cuts by the County last year, MCC went from full day to half-day, creating difficulties for the students who relied on the full-day classes. They had to minimize their school curriculum to fit the half-day schedule. Receiving funding to return the MCC Head Start Center to a full-day basis has been a welcome addition for both parents and children.

Funding cuts last year also affected the Moloka'i Head Start Summer Program, also modified from a full-day program to half-day. It is hoped that by summer 2001, we will be able to receive funding from the County to again provide full-day services to the Moloka'i community.



Moloka'i Head Start Staff and families on Family Fun Day.



Head Start children get ready to enjoy a program outing.

## The department of Community Services provides a vast array of services to senior citizens and low-income residents of Maui County.

The community service staff specialize in outreach and referrals, support services, case management/job development, pre-employment training, career development, consumer protection, Hispanic programs, and house cleaning and laundry services for the frail elderly and the disabled.

**CASE MANAGEMENT.** Case management is an innovative strategy to address the many problems facing human services. Case management incorporates two broad functions — to provide individualized counseling and to link clients to service providers in the community. Staff on Maui, Moloka'i and Lana'i provide intake/assessment, pre-employment and life skills training, referrals and consumer education to the residents of Maui County.

Our state funded Family Development for Immigrants and Refugees, the Employment Related Services Program and our federally funded National Farmworker Jobs Program assists eligible individuals in obtaining unsubsidized employment. The programs provide support services for pre-employment training, on-the-job training, vocational training and English-as-a-Second Language courses.

**CHORE SERVICES.** MEO continues to work closely with the Department of Human Services and the Office on Aging to provide services to disabled and frail elderly residents throughout the County of Maui. The program has enabled over 300 disabled and aged individuals to attain and maintain an independent life style. Services include light housekeeping, laundry, ironing, simple household repairs and light yard work. Keeping over 300 participants out of institutions represents considerable savings to the state, which might otherwise be responsible for their care.

**EMERGENCY NEEDS ASSISTANCE.** The Hawaii Community Foundation has awarded grants to MEO to provide emergency assistance to needy individuals of Hawaiian ancestry under the Lillian and Irving Singer funds. MEO has also received Alice Soper and Theresa Hughes funds to assist underprivileged individuals 50 years and older. The Gwenfreed Allen fund assists needy individuals 62 years and over and individuals that are diagnosed with a mental disorder. In addition, the Kitano Watanabe fund assists children 17 and under with educational and/or medical needs. This year, 105 disadvantaged individuals were assisted through the combined funds of the Hawaii Community Foundation.



Irene Kaahamui, Branch Director, Moloka'i and Jersula Mamaba, Board Member/Moloka'i.

## COMMUNITY SERVICES

### HOMELESS PROGRAMS.

The Community Services Department administers two homeless grants to help the at-risk or homeless residents of Maui County.

Through the Hawaii Housing Authority, a state funded program; the department has assisted 120 homeless individuals with rental assistance. We also received a grant from the County of Maui Homeless Program to assist individuals with rent or utility disconnection assistance. This year we assisted 178 families with rent or utility assistance.

**ENLACE HISPANO (Hispanic Link).** A total of 170 Hispanic clients and their

families were provided with assistance in the areas of unsubsidized employment, rental assistance and legal advice in immigration, criminal, civil, discrimination, and workers compensation, transportation services, utility assistance, translation services and referrals for food assistance, clothes and shelter.

The Enlace Hispano project also participated in several activities throughout the year. Among these were the November 1999 Presentation of Hispanic Culture at Wailuku Elementary School. On December 11, 1999 they attended the Tigres Del Norte Show in Kona on the Big Island and were introduced to the Big Island community where they shared Maui's efforts to assist the Hispanic community. In December 1999, the project also began the presentation of Hispanic Culture workshops on a monthly basis to the Maui Police Department.

In coordination with Christ The King Church, the program participated in a December presentation at the Kaahumanu Shopping Center with more than 400 people in attendance. In January 2000,

five clients of the project graduated with their citizenship naturalization. Enlace Hispano began MEO- Maui Community College Interchange classes in March 2000. This program allows students of MCC to meet with clients to learn Spanish and for our clients to practice their English. In April 2000, the National Council of La Raza came to Maui and provided training for PROMOTORES (health aid workers) in which 13 clients of Enlace Hispano received health training in TB, STD'S, HIV, Cancer, Diabetes and Tobacco.



Citizenship Graduation Ceremony for Enlace Hispano Clients.



MEO Maui Community College Interchange Class (English-Spanish Students).

## HARRY & JEANETTE WEINBERG FAMILY CENTER

### OUR NEW MEO BUILDING



Reverend David Kaalakea (right) and Alana Estara give the traditional Hawaiian Blessing for the new building.



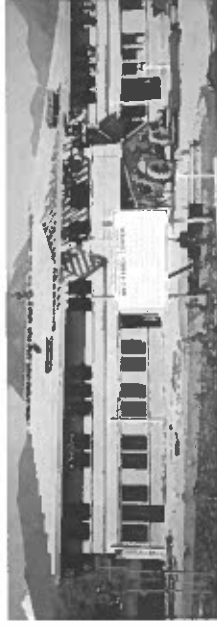
Representatives of the many clients served by MEO participate in groundbreaking for the Harry and Jeanette Weinberg Family Center, October 30, 1998.



Audrey Rocha-Reed, Cameron Center (right), George Kaya, County of Maui, Governor Ben Cayetano, Gladys C. Baisa, MEO Executive Director, former House Speaker Joe Souki, State Senator Roz Baker, Greg Bayless, project architect, and Bill Wong, MEO Board of Directors, break ground for the new MEO building.



Greg Bayless, project architect (left), Don Medeiros, MEO Managing Director, Gladys C. Baisa, MEO Executive Director, and Jim Whitehead, Volunteer Project Coordinator examine plans for the new building.



The roof is raised; we're halfway home!



The new MEO building is completed in August 1999.



Mayor James "Kimo" Apana (left) and MEO Executive Director Gladys C. Baisa write the traditional maile lei to officially open the new MEO building on August 14, 1999.



Delighted MEO Board members accept a check from the Harry and Jeanette Weinberg Foundation. When added to the \$2.5 million granted by the State of Hawaii the fundraising is complete for the new Family Center. It's all paid for now!

## MEO's energy program helps reduce the cost of electricity and encourages conservation.

**WEATHERIZATION ASSISTANCE PROGRAM (WAP)**. The Weatherization Program's primary functions are to teach and encourage low income individuals and families, elderly, and persons with disabilities to conserve energy through means of education and the installation of energy saving devices to aid those who are least able to afford utility costs.

The services are limited to providing energy education to people receiving installation of hot water heater blankets, timers, and solar hot water heater systems. The installations of solar hot water systems involve families (with at least five members) who are homeowners that consume an average of 9,600 kilowatt-hours per year. The installation of timers and blankets may involve homeowners and renters.

During the year, the program assisted twenty-four households by installing thirty-one energy saving devices in Maui County. Twenty-one devices were completed on Maui, and ten on Moloka'i. We also, provided thirty-two customers with an energy education audit, which enhances the probability of energy reduction and financial savings. Overall, a total of 110 people received the benefit of an energy education audit and the installation of energy saving devices. The savings accomplished through the Weatherization Assistance Program are an enormous assistance to our low-income residents.

### LOW-INCOME HOME ENERGY ASSISTANCE PROGRAM

(**LIHEAP**). The program assists households in one of two ways. They are either eligible for Energy Crisis Intervention (ECI), which restores or prevents the termination of electricity or gas by the utility companies or they may receive an Energy Credit (EC). The EC is an amount of money that is credited to a household's account to help eligible low-income families offset the cost of energy.

This year a total of 503 participants received temporary energy assistance by either being eligible for Energy Crisis Intervention or an Energy Credit. Throughout Maui County, MEO provided case management services to 52 ECI and 451 EC customers.



*Fred Baisa completes the installation of a hot water heater insulation jacket for an MEO client.*

## Our employment and training programs provide low-income and disadvantaged people with an array of services, including case management, life skills and job training, support services and referrals.

### WIA 167 NATIONAL FARMWORKER JOBS PROGRAM.

This statewide employment and training program assists seasonal farmworker families with cultural and family strengthening, language enhancement, job development and career training, employment and job retention and vocational and case management services. This year we served 106 farmworkers who faced multiple barriers, including unemployment. Of the 106 farmworkers, 88 entered unsubsidized employment and became self-sufficient, leaving public assistance.

### OCS EMPLOYMENT RELATED SERVICES.

The Employment Related Services program continues to emphasize individual assessment and pre-employment training, commonly referred to as "PET." Instructors continually upgrade the curriculum by revising the training manual. Some of the changes that occurred this year were an upgrade of career models, interview tapes and computer software for the computer class.



*Carlina Cabbat (left) and Debbie Kamalii review a Maui-to Work Client's case management activities.*

## EMPLOYMENT & TRAINING

**SENIOR COMMUNITY SERVICE EMPLOYMENT PROGRAM (SCSEP)**. The SCSEP program is an initiative to provide low-income individuals age 55 years and older with employment training assistance and job placement with private enterprises. This year the SCSEP program was highly commended by the Hawaii State Department of Labor, for exceeding the goals set by the agency. This year SCSEP provided job training to 41 individuals of which 12 were successfully placed into unsubsidized employment.

### MAUI - T O - W O R K ( M T W )

. As a result of Welfare Reform, many Maui County residents will eventually reach their

5-year limit on receiving welfare benefits.

The MEO Maui-to-Work (MtW) Program administers a federally funded competitive grant awarded to Maui Economic

Opportunity, Inc. through the U.S. Department of Labor to assist these clients.

The goal of the program is to place 168 of 300 clients who are TANF recipients on welfare and non-custodial parents, whose children are on welfare or who receive other benefits, and who are not able to



*Debbie Kamalii (left) awards certificates to Maui-to-Work Participants who completed their Job Readiness Training.*



*The Community Services Department staff.*

## EMPLOYMENT & TRAINING

pay child support, into unsubsidized jobs. A second goal is to ensure that they retain their jobs for at least six months thereafter and assist in furthering opportunities for job progression and better paying jobs. The program serves the entire County of Maui and provides case management, supportive counseling, pre-employment training, support services, job placement, post-employment training and services, and long-term job retention services.

MtW is a program that includes a strong collaboration among various non-profit agencies, the State of Hawaii's Department of Human Services, the County of Maui's Department of Housing and Human Concerns, Maui Community College, Hui Malama Learning Center, the Maui Chamber of Commerce, the State of Hawaii's Child Support Enforcement Agency / Family Court, the State of Hawaii's Adult Probation Agency, and the Maui Drug Court.

Because of the impending community wide social and economic effects on residents of Maui County as more people are dropped from the welfare rolls, it is critically important that the whole community becomes involved by providing employment opportunities, training, social services and family support.

**WELFARE - T O - W O R K**. MEO administers the federal Welfare to Work (WTW) Formula Grant with the goal of moving the "hardest to place" TANF recipients into long term unsubsidized employment. The Program began in January 1999 and is slated to end in November 2000. It has served 65 clients, including seven participants on Moloka'i. A total of 47 participants have been placed in unsubsidized employment.

A team comprised of a Case Manager, a Job Developer and a Social Worker staffs the WTW Program. Services provided include case management, job development, job placement, pre-employment and retention services, supportive counseling, and other support services.



*Entlace Hispano Mens Soccer team Sponsored by Litton Industries.*

## The MEO Microenterprise program provides economic development for Maui and Kaua'i Counties and helps entrepreneurs realize their dream.

Growth continued for the Microenterprise program during its fourth year. While it took Microenterprise three years to give out the first 100 loans (June, 1999), it will take less than half that time to award the second 100 loans (December, 2000). With that accelerated growth, the average loan has increased to almost \$3,400 and the default rate has declined to only 6.1%. During the past year, Microenterprise passed the half-million dollar mark in loans made and as of the end of June has lent out almost \$600,000.

Approximately 80% of this activity was in Maui County and the rest was in Kaua'i County.

Since the MEO Microenterprise program began, over 310 jobs have been created and retained, 78 businesses have been started and another 80 have been expanded. This is economic development at the grass roots level. The program remains one of providing small amounts of capital to entrepreneurs who do not have access to traditional lending, supporting their business with technical assistance and continued lending as needed. The initial loan amount is up to \$5,000 with step-loans (additional loans after at least 6 months as a borrower) available up to \$25,000.

Staff changes this year include the appointment of Barry Gay as Director of Economic Development and Danny Aagsalog as the Microenterprise Fund Manager.

The program expanded to Kaua'i with the help of a two-year, \$150,000 grant from the State Office of Community Services. With the opening of an office in Lihue, Larry Dressler, a former Bank of Hawaii'i loan officer, was brought on board to administer the microloan aspect and help with the FastTrac business education classes. Larry's expertise and knowledge of the local community is reflected in the excellent loans he has processed, from small home based products to agricultural and retail shops.

The Microenterprise program itself underwent some big changes in the past year. MEO



*Loan Fund Manager Danny Aagsalog helps a borrower with a loan application.*

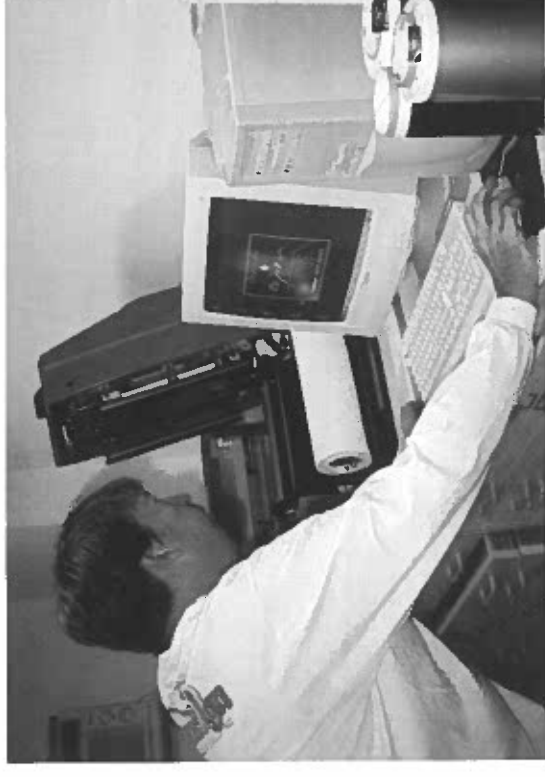
Microenterprise is now MEO Business Development Corporation, a non-profit affiliate of MEO, Inc. This move was necessary in order to obtain the next goal. In May, MEO Business Development Corporation was certified by the U.S. Department of the Treasury as a Community Development Financial Institution (CDFI). We are now also eligible for some of the \$50 million in core funding from the CDFI Fund.

### BUSINESS KNOWLEDGE.

The FastTrac New Venture training program continues to help future entrepreneurs by teaching them how to do a feasibility study on their business idea. The study, along with the financial information we also teach, makes up a business plan. The real key is that we don't just teach how to write a feasibility study, we provide the tools so a potential entrepreneur can see if the business they may want to start in the future is feasible. During the training we bring in successful entrepreneurs to tell their story, share their struggles, and answer questions about how they made the decisions that led to their survival. We also have professionals explain the important aspects of business, including; "what records do I need to keep, what taxes am I responsible for, which business entity should I form (LLC, corporation, etc.)," and other issues. Dan Flavin, the FastTrac instructor, has now taught 13 classes resulting in 223 graduates. The FastTrac instructor on Kauai is Robert Inguatiato who has finished 3 classes with 18 graduates.

**SAVING FOR A BETTER FUTURE.** This year, we also started offering a new program called Individual Development Accounts (IDAs). A loan recipient has the option of opening a savings

account with the goal of saving up to 10% of their loan amount over the time of their loan. At the end, if they have made all of their savings deposits and attended mandatory economic literacy classes, MEO will match their savings on a 1:1 basis. The money is designated to purchase a business asset or post-secondary education to help the business.



*Doug Allen of Island Signs sets up a job on his new equipment made possible with a microloan.*



*Microenterprise Fast Trac Graduation*

**If you are 13 to 19 years old, and seriously want to learn how to work, how to apply for a job, and how to get along better at school and at home, then the MEO YouthBank Life-skills Job-skills program is the place for you!**

A series of classes on subjects like Communication, Values Awareness, Conflict Resolution, and Nutrition open up the world of life-skills and job skills. Role playing and acting brings out trust and real communication as all eyes follow the common goal, friends are saved from imaginary hot lava, and the complete trust of another is required in a backward free fall.

**COMMUNITY SERVICE.** The YouthBank participants help other non-profit agencies in the community such as Habitat for Humanity by completing low cost housing, or planting native plants in community parks. Other YouthBank members have assisted with the Senior Fair, the Charity Walk, the Cameron Center Bazaar, the Mercedes Golf Championship, the Xterra Triathlon and the Japanese Festival. Mayor James "Kimo" Apana is among the many community members who have shown their appreciation to the YouthBank members for their hard work on behalf of the people of Maui.

**EMPLOYMENT PREPARATION.**

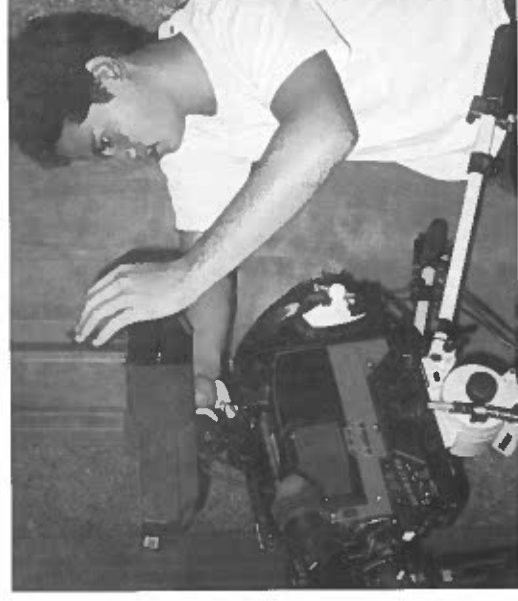
Classes are held to learn about completing job resumes. Participants experience mock job interviews to help them prepare for the real thing. Specific training is provided at locations throughout Maui. One example is the training provided



Job skills class. Getting it right.



Helping hands at a Habitat for Humanity House.



Lights, Camera, action at Akaku.

by Akaku Community Access Television on how to produce a television program. Hikes, cultural excursions and camping help to weave all these growth experiences together. Campouts become a kind of rite of passage, one giant step toward maturity, survival skills and social abilities. At the conclusion of the program, an evening out and a graduation ceremony signify that the MEO YouthBank member is ready to do better in school, at home and in the workplace.

**AMERICORPS.** The MEO YouthBank AmeriCorps is for participants of college age who could use a scholarship, have a passion for improving the environment and are ready for some fun and hard work. Volunteering full time or part time, receiving a living allowance and a scholarship, working in the rainforests and on mountaintops is the dramatic call to the AmeriCorps member. Eradicating alien species, planting native plants and fencing out destructive animals is a job experience like no other.

An exciting new service implemented by MEO YouthBank is the provision of complete case management according to individualized service plans for 13 to 21 year old disadvantaged children of seasonal farm workers.

Jim Crowe, Duke Sevilla, Rose Falcon, Donna Borge and Lira Quitevis work together to bring all these benefits to Maui's promising young people through the services of the MEO YouthBank program.



Working together. Imaginary life saving.



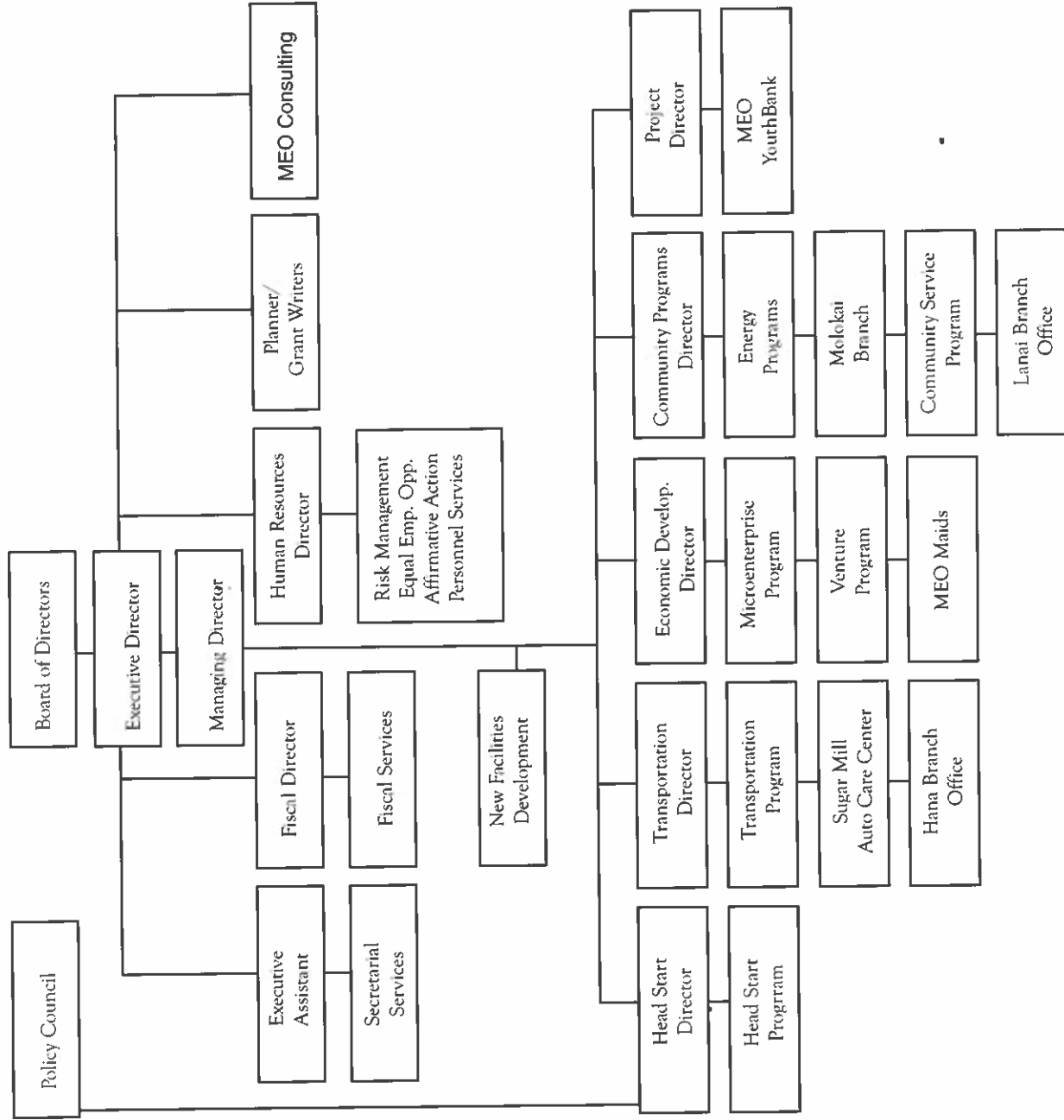
We made it. We graduated!!



Teach a man how to fish . . .



Plant one tree. Then another, and then another.



**TRANSPORTATION SERVICES:** Transit operations on Maui, Moloka'i, and Lana'i.  
**HEAD START PROGRAM:** Head Start classes on Maui, Moloka'i, Lana'i, and Kaua'i.  
**COMMUNITY SERVICES PROGRAMS:** Senior Clubs, Red Card Program, Legal Services, Outreach & Referral, Chore Services, Employment & Training for the Low Income, Homeless Programs, Surplus Food, Senior Community Service Employment Program, Employment & Training for Immigrants and Refugees, National Farmworker Jobs Program, Maui To Work, Welfare To Work.  
**ENERGY PROGRAMS:** Weatherization Assistance Program, Low Income Home Energy Assistance Program.  
**MEO CONSULTING:** Fee for services in Administration, Fiscal, Personnel, Board Training, Board Planning, and other specialized training. Contracting Organizations: IMUA Rehab, Cameron Center.  
**NEW FACILITIES DEVELOPMENT:** Transportation Baseyard Relocation Project, Kihei Head Start, Infant Care Center at Cameron Center.  
**YOUTH BANK:** Americorps, National Farm Worker Jobs Program, Kamalama Youth Program, Office of Hawai'ian Affairs, Department of Hawai'ian Homelands.

GRANTS	TOTAL BUDGET
<b>1. State OCS Grants</b>	
CIP-MEO Facility (MEO Family Center)	2,500,000
CSBG - Federal	378,623
Transportation	230,000
Americorps Achieve Hawai'i	117,884
Head Start	115,000
Employment Creation Services - Kauai	95,000
AmeriCorps Achieve Hawai'i In-Kind	63,334
Employment Related Services	58,000
Family Development and Case Management for Immigrants	50,400
Weatherization Assistance Program - Federal	31,436
<b>2. Other State Grants</b>	
Welfare to Work	430,741
Chore Service - Title II	101,658
Department of Hawaiian Home Lands - Youth	57,000
Office of Hawaiian Affairs	54,100
State Homeless Emergency Program	24,075
LIHEAP	4,000
TEFAP	7,360
<b>3. County of Maui Grants</b>	
Transportation	1,778,425
Transportation for Persons with Disability	357,000
Head Start After School Care	164,250
CDBG Micro-loan Operation	139,500
CDBG Micro-loan Funds	117,000
CDBG Repaid Micro-loan Fund	178,000
YouthBank Program	100,000
Maui County Summer Preschool Program	72,000
Emergency Rental Housing Assistance	82,000
Microenterprise Program	50,000
County Chore Service - MCOOA	70,958
Transportation - MCOOA	32,857
YouthBank AmeriCorps Program	23,000
<b>4. Federal Grants</b>	
Transportation - ISTEA-FTA - Relocation Capital Improvement Grant	1,240,000
Head Start Grant	2,252,661
Maui to Work	1,000,000
Head Start In-kind	423,462
National Farmworker Jobs Program	224,571
National Farmworker Jobs Youth Program	200,000
Senior Community Service Employment Program	151,838
Transportation - Section 18 (FTA)	150,400
SCSEP - In-kind	16,871
FEMA - Emergency Food & Assistance	3,781
<b>5. Private Foundation Grants</b>	
Weinberg Foundation - MEO Family Center	1,300,000
W.K. Kellogg Foundation - Hispanic Link Program	139,840
Other Foundations	64,528
Hawai'i Community Foundation	64,000
Hawai'i IDA Collaborative	5,000
Christian Lassen Aloha Foundation	2,238
<b>6. Private Financial Institutions</b>	
Microenterprise Loan Fund - Bank of Hawai'i	250,000
Microenterprise Loan Fund - Z Account	70,000
Microenterprise Loan Fund Interest and Fee Income	7,500
<b>7. Venture Projects</b>	
MEO Maid Services	70,000
MEO Administrative and Financial Services	46,800
MEO Consulting Services	4,000
MEO Internet Venture	1,200
MEO YouthBank Entrepreneurial	500
<b>8. MEO Other Projects</b>	
Other Transportation Program	753,583
Miscellaneous Fund-raising Activities	157,629
MEO Microenterprise Program	40,000
<b>TOTAL FUNDING</b>	<b>\$16,124,003</b>

SENIOR STAFF



Gladys C. Baisa  
Executive Director



Don Medeiros  
Managing Director



Mona Kailiponi  
Finance Director



Debbie Cabebe  
Human Resources  
Director



Bill Bates  
Community Program  
Director



Barry Gay  
Director of Economic  
Development



Loreta Pacubas  
Community Services  
Director



Agnes Groff  
Transportation Director



Jim Crowe  
YouthBank Director



Lyn McNeff  
Head Start Director



Stephen Kealoha  
Maui-to-Work Project  
Coordinator



Irene Kaahanui  
Moloka'i Branch Director



Ken Hunt  
Grant Writer/Planner



JJ Vroom  
Executive Assistant

ACTIVITIES



Senior Staff Retreat. Guess Who?  
Gladys Basia and Agnes Groff.



Loreta Pacubus (left), Don Medeiros, Lt. Governor Mazie Hirono, and Agnes Groff at Senior Citizen Aloha Party.



MEO Employee Christmas Party.



JJ Vroom at the MEO Christmas party.



Boo! Who is it that's all dressed up for Halloween?



Hidden talent emerges at the MEO Employee Christmas Party.

## SENIOR ACTIVITIES



Gladys Baisa (right) and Loretta Pacubas, Community Services Director "shake the bag" at the Aloha party drawing for door prizes.



Mayor James "Kimo" Apana at the Aloha party. Standing with him is MEO Board member Beatrice Kahamu, chair of the event.



Enjoying the activities at the Annual Seniors Aloha Party at the Aston Outrigger Resort.



Stacy Souza (left), Bob Douglas and Don Medeiros enjoying the MEO Annual Volunteer Appreciation Luncheon.



Seniors entertaining the audience at the Aloha Party.



The music was hot at this years Aloha Party!

## MEO

MEO, Inc.  
99 Mahalani Street  
Wailuku, Maui, Hawai'i 96733  
(808) 249-2990  
FAX: (808) 249-2991

Office Hours:  
7:45 a.m. to 4:30 p.m.  
Monday through Friday

**HARRY & JEANETTE WEINBERG FAMILY CENTER** ..... 249-2990  
99 Mahalani Street • Wailuku, HI 96793  
Community Services, Employment and Training ..... 249-2970  
Fax ..... 249-2971  
Head Start ..... 249-2988  
Fax ..... 249-2989  
Transportation ..... 877-7651  
Fax ..... 871-2171  
YouthBank ..... 249-2977  
Fax ..... 249-2991

### BRANCH OFFICES

**Hana** ..... 248-8282  
Hana Neighborhood Center • Uakea Rd • P.O. Box 67 • Hana, HI 96713  
Office Hours: 7:45 a.m.-2:30 p.m. Monday-Friday

**Lana'i (Lana'i City)** ..... 565-6665  
1144 Ilima Ave., Suite 102 • P.O. Box 630068 • Lana'i City, HI 96763  
Office Hours: 7:45 a.m.-4:30 p.m. Monday-Friday  
Fax ..... 565-6665

**Moloka'i (Kaunakakai)** ..... 553-3216  
380 Kolapa Place • P.O. Box 677 • Kaunakakai, HI 96748  
Office Hours: 7:45 a.m.-4:30 p.m. Monday-Friday  
Fax ..... 553-3776

**Moloka'i Head Start** ..... 553-9805  
380 Kolapa Place • P.O. Box 677 • Kaunakakai, HI 96748  
Office Hours: 7:30 a.m.-3:00 p.m. Monday-Friday  
Fax ..... 553-3776

**Kauai Microenterprise** ..... 636-6577  
Larry Dressler • 4374 Kukui Grove, Suite 202 • P.O. Box 2340 • Lihue, HI 96766  
Office Hours: 7:45 a.m.-4:30 p.m. Monday-Friday  
Fax ..... 245-3031