

NFJP



National Farmworker Jobs Program

January 2022

*A DEPARTMENT OF LABOR EMPLOYMENT AND TRAINING ADMINISTRATION 100% FUNDED PROGRAM

Kauai Nursery and Landscape

Kauai Nursery & Landscaping (KNL) is a full-service nursery and licensed (#ABC-10825) landscape company offering ornamental and edible plants and trees; soil, compost, and mulch; pots and planters; statuary and fountains; garden accessories; crushed rock and other aggregate; and stepping stones, bricks, and pebbles. Contracting services include landscape and hardscape design for professional installation or do it yourself; irrigation services; landscape maintenance; and clearing and hauling. KNL also offers Department of Agriculture certified plants for shipment to the mainland and inter-island. KNL is Kauai's largest retail and wholesale nursery offering over 80,000 square feet of retail space and employing over 100 specialized staff, including Landscape Architects, Designers, Installation and Maintenance Crews, Irrigation Specialists, Arborists, Pesticide Specialists, Nursery Sales Associates, Propagation Specialists, Mechanics, Office Staff, and Nursery Managers.

KAUAI NURSERY & LANDSCAPE



'Olelo Noeau:

"I ola no ke kino I ka mā'ona o ka 'ōpū".

The Body enjoys health when the stomach is well filled.

" Ua ola loko I ke aloha."

A healthy diet is essential to good health.

In This Issue

- Garden Isle
 - Kauai Nursery & Land scape
 - 'Olelo Noeau
- Maui Island
 - Rowena Produce and 'Ai Hua Food Voucher Program
- Eating Healthy
 - Molokai Sweet Potato Pie
- Staying safe



Phone: 808-249-2970
Fax: 808-249-2971

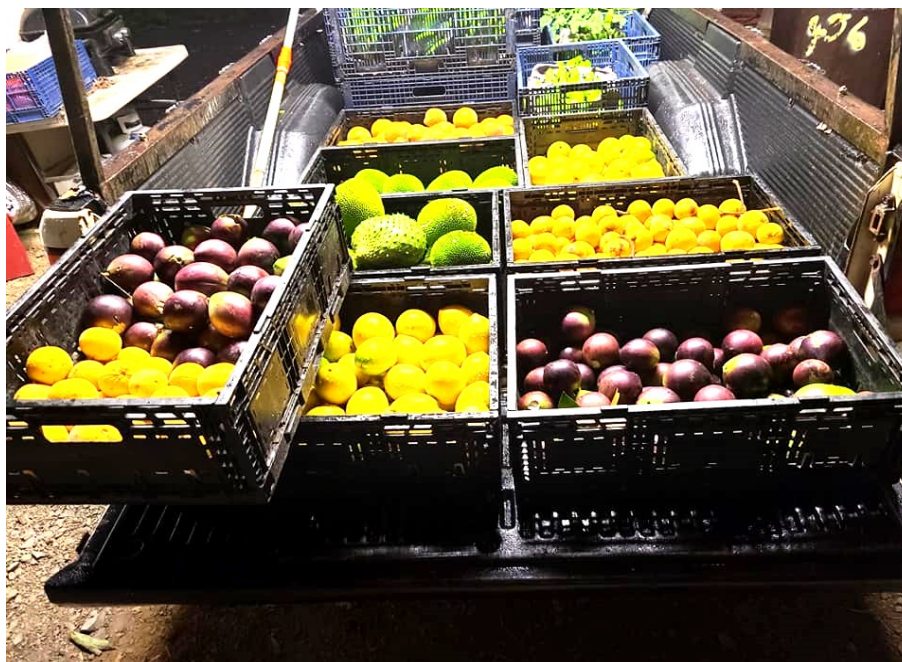


Email: cs@meoinc.org
Website: meoinc.org
FB: <https://www.facebook.com/MEONFJP>



99 Mahalani St.
Wailuku, HI 96793

ROWENA'S PRODUCE



'AI HUA FOOD VOUCHER PROGRAM

Applications are being accepted from Native Hawaiians impacted by the COVID-19 pandemic for the 'Ai Hua food voucher program, funded by a \$150,000 Office of Hawaiian Affairs grant and administered by Maui Economic Opportunity.

A fillable application is available online. Forms also can be obtained at MEO's Wailuku office, 99 Mahalani St. Applications can be mailed out to individuals as well.

Eligibility requirements follow:

- At least one household member is Native Hawaiian.
- At least one household member has been impacted by COVID-19.
- Residents of Maui Island.

Documentation needed:

- Photo ID of all adults.
- Proof of Native Hawaiian ancestry – birth certificate, signed determination letters provided by Native Hawaiian serving organizations (Lili'uokalani Trust – Kipuka Maui, Department of Hawaiian Home Lands, Alu Like, Hui No Ke Ola Pono, Kamehameha Schools Maui, etc.).
- Recent 1040 or N-11 tax form.
- Proof of income loss due to pandemic.

The amount of vouchers – with a maximum of \$150 per household – will be issued monthly based on family size and will continue through Sept. 30, 2022, or until funds are exhausted.

Vouchers can be used at local farmers markets and online with Maui Hub (www.mauihub.org) to purchase local fresh fruits, vegetables and protein items. The program will benefit both the Native Hawaiian families who receive the vouchers for the fresh food and the local farmers who provide the products for the farmers markets.

For questions about the program, contact Jennifer McGurn at MEO by phone at (808) 243-4360 or by email jennifer.mcqum@meoinc.org.

EAT HEALTHY

BUY LOCAL

The shorter the time between the farm and your table, the fresher and more nutritious the produce. By supporting local farmers today, you are ensuring that there will be farms near you tomorrow.

Local food is healthier, helps protect natural resources, and helps keep small farms in the hands of local families.

ROWENA'S PRODUCE AND FAMILY FARM

The Moen family got a plot of land in Haiku and started farming in 2001. They sell their produce at their store located at 230 Hana Hwy. Not only do they sell fruits and vegetables, they also sell spices, pastries, and food packaging supplies.

Rowena and her family grows a wide variety of fruits and vegetables on their 8 acre farm in Haiku. Believe it or not their farm started off with bananas. Their largest crop is Apple Bananas and Valerie Bananas. She is the only source of Valerie Bananas on Maui. They grow other fruits such as squash, avocado, sugar apple, yellow mangosteen, star apple, and jackfruit.

Open daily:

8 a.m.-6:30 p.m.

STAYING SAFE DURING COVID-19

Wear a mask in public and it should cover your nose and mouth at all times, stay 6 feet apart from others, avoid crowds and poorly ventilated indoor spaces. Wash your hands often with soap and water for at least 20 seconds especially after you have been in a public place, or after blowing your nose, coughing, or sneezing,.



RECIPE

Moloka'i Sweet Potato Pie

BY: FAIRMONT KEA LANI, MAUI

INGREDIENTS

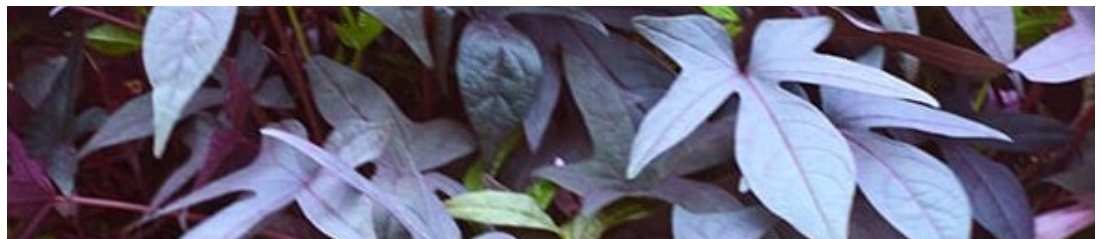
Yield: 2

- 2 (9-inch) pie shells, unbaked
- ½ cup (1 stick) butter, softened
- 2 cups cooked and mashed Moloka'i sweet potatoes
- 2 cups granulated sugar
- ½ cup + 2 tablespoons evaporated milk
- 1 teaspoon vanilla extract
- 3 eggs, beaten
- 1½ teaspoons cinnamon

PREPARATION

Difficulty: Easy Time: 15 Minutes Total Time: 1 Hour

- Preheat the oven to 350 degrees.
- Put the butter, potatoes, sugar, and evaporated milk into a large bowl and mix well.
- Add the vanilla, eggs, and cinnamon and mix again. Pour into the prepared pie shells.
- Bake in the 350-degree oven for about 1 hour, or until set. Cool and serve.



MAUI

**\$18+ per hour
6 month internships!**



Available Internship Positions:

Hawaii Farm production technician
Maui Farm Administrative Specialist
Kula Environmental Conservation Technician
Hana KOKO FM Radio Station Manager
CIWRX (IT) Remote Worker
Kipahulu Food Distributor/Cleaner
Hale Makua Community Health Worker
Goodwill Outreach Support Specialist



SPRING
2022

CERTIFIED NURSE AIDE TRAINING PROGRAM

Sponsored by



Learn the fundamentals of nurse aide and caregiving to become a skilled entry-level health care provider. This 15-week long training program includes online lectures, in-person labs & clinical simulations, BLS & First Aid certification, and a 100-hour internship/work experience requirement. Students will prepare for the Hawaii state examination to earn their Nurse Aide certification.

Full tuition sponsorships available!

PROGRAM SCHEDULE

Begins March 21, 2022 | Ends June 30, 2022

Online Lectures every Tuesday & Wednesday
from 5:30 p.m. - 8:00 p.m. (via Zoom)

In-person Labs or Clinical Simulations
every Monday & Thursday with
Morning option from 9:00 a.m. - 12:00 p.m. or
Evening option from 5:30 p.m. - 8:30 p.m.

Review the detailed program schedule [HERE](#)

FOR MORE INFORMATION:
Email chazao@hnlcc.org or Call (808) 984-3606



Kealahouma
An Honoring to diversity & inclusion

MAUI COLLEGE

OAHU

University of Hawai'i Community Colleges

Hana Career Pathways

- Earn an industry certification
- 100% Tuition assistance for eligible applicants (\$1800 value)
- Eligibility Criteria:
 - Hawaii resident;
 - U.S. Citizen or permanent resident;
 - Unemployed or underemployed (working less than 20hrs/wk. And /or earning less than \$20/hr.)

Apply online:
uhcc.hawaii.edu/reimagine

KAUAI



Increasing local food production and access for a resilient Kauai since 2006

HAWAII ISLAND



NATIONAL FARMWORKER JOBS PROGRAM (NFJP)

*A Department of Labor Employment & Training Administration 100% Funded Program

99 Mahalani St. Wailuku HI 96793 Mobile: 808-344-5550 Direct: 808-249-2970

The NFJP provides job training, employment assistance & a variety of support services to migrant, seasonal farmworkers & their dependents with the goal of helping to secure full-time employment in the career of YOUR choice! Please call us, we are READY & excited to help YOU - Change your Life!

PROGRAM INQUIRY REQUEST:

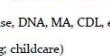
NAME _____
PHONE _____
EMAIL _____

*check the services below that most interest you

- ___ Career-Individual Employment Planning (IEP)
- ___ Job Placement and On the Job Training (OJT)
- ___ Educational Training and Certifications (Driver License, DNA, MA, CDL, etc)
- ___ Support Services (work tools; transportation; Housing; childcare)

*Program Eligibility includes Farm Work experience & Household Income Guidelines

Number of Household Member's Identified on Tax return	Annual Income	Monthly Income
1	\$22,330	\$1,852.60
2	\$30,060	\$2,505.00
3	\$37,890	\$3,157.50
4	\$45,720	\$3,810.00
5	\$53,550	\$4,462.50
6	\$61,380	\$5,115.00
7	\$69,210	\$5,767.50
8	\$77,040	\$6,420.00
For each additional person add: \$5,220		



American Job Center Oahu
Dole Cannery Complex
680 Iwilei Road, Suite 700
Honolulu, HI 96817
Telephone: (808) 768-5701

American Job Center Maui
110 Ala'ihī Street, Suite 209
Kahului, HI 96732
Telephone: (808) 270-5777

American Job Center Hilo
427 Kilauea Avenue
Hilo, HI 96720
Telephone: (808) 935-6527
Email: ajchuser@hawaiiicounty.gov

American Job Center Kauai
4444 Rice Street. #302
Lihue, HI 96766
Telephone: (808) 274-3056

